

RP00419

Leader in Biomolecular Solutions for Life Science



# Recombinant Human HGF receptor/c-MET/MET Protein

Catalog No.: RP00419 **Recombinant**

## Sequence Information

Species	Gene ID	Swiss Prot
HEK293 cells	4233	P08581-1

### Tags

C-hFc

### Synonyms

MET; oncogene MET; HGF R; HGF/SF receptor; AUTS9; cMET; Met (c-Met); RCCP2; SF receptor

## Product Information

Source	Purification
HEK293 cells	> 95% by SDS-PAGE

### Endotoxin

< 1 EU/μg of the protein by LAL method

### Formulation

Lyophilized from 0.22 μm filtered solution in PBS (pH 7.4). Normally 8% trehalose is added as protectant before lyophilization.

### Reconstitution

Centrifuge the vial before opening. Reconstitute to a concentration of 0.1-0.5 mg/mL in sterile distilled water. Avoid vortex or vigorously pipetting the protein. For long term storage, it is recommended to add a carrier protein or stabilizer (e.g. 0.1% BSA, 5% HSA, 10% FBS or 5% Trehalose), and aliquot the reconstituted protein solution to minimize free-thaw cycles.

## Background

c-Met, also called tyrosine-protein kinase Met or hepatocyte growth factor receptor (HGF R), is a protein that in humans is encoded by the MET gene. The protein possesses tyrosine kinase activity. The primary single chain precursor protein is post-translationally cleaved to produce the alpha and beta subunits, which are disulfide linked to form the mature receptor. Following activation by ligand, interacts with the PI3-kinase subunit PIK3R1, PLCG1, SRC, GRB2, STAT3 or the adapter GAB1. Recruitment of these downstream effectors by MET leads to the activation of several signaling cascades including the RAS-ERK, PI3 kinase-AKT, or PLCgamma-PKC. The RAS-ERK activation is associated with the morphogenetic effects while PI3K/AKT coordinates prosurvival effects. During embryonic development, MET signaling.

## Basic Information

### Description

Recombinant Human HGF receptor/c-MET/MET Protein is produced by HEK293 cells expression system. The target protein is expressed with sequence (Glu25-Thr932) of Human HGF receptor/c-MET/MET (Accession #P08581-1) fused with a C-hFc tag at the C-terminus.

### Bio-Activity

### Storage

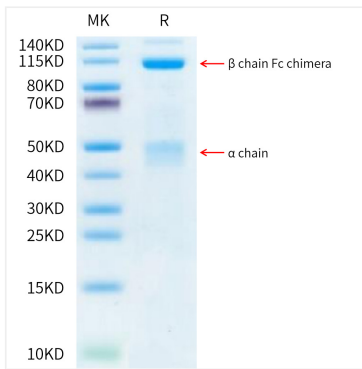
Store at -20°C. Store the lyophilized protein at -20°C to -80 °C up to 1 year from the date of receipt. After reconstitution, the protein solution is stable at -20°C for 3 months, at 2-8°C for up to 1 week. Avoid repeated freeze/thaw cycles.

## Contact

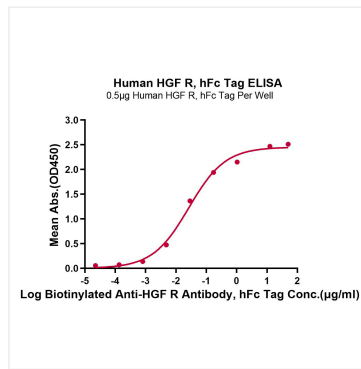


[www.abclonal.com](http://www.abclonal.com)

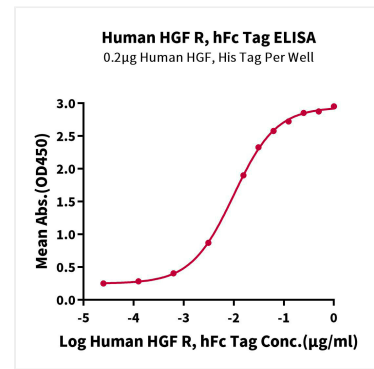
## Validation Data



Recombinant Human HGF receptor/c-MET/MET Protein was determined by Tris-Bis PAGE under reducing conditions.



Immobilized Human HGF R, hFc Tag at 5 μg/mL (100 μL/Well) on the plate. Dose response curve for Biotinylated Anti-HGF R Antibody, hFc Tag with the EC<sub>50</sub> of 26.7ng/mL determined by ELISA.



Immobilized Human HGF, His Tag at 2 μg/mL (100 μL/Well) on the plate. Dose response curve for Human HGF R, hFc Tag with the EC<sub>50</sub> of 23.7ng/mL determined by ELISA (QC Test).