

RP00297

Leader in Biomolecular Solutions for Life Science



Recombinant Human Glypican-1/GPC1 Protein

Catalog No.: RP00297 **Recombinant**

Sequence Information

Species	Gene ID	Swiss Prot
HEK293 cells	2817	P35052

Tags

C-His

Synonyms

GPC1;glypican

Product Information

Source	Purification
	≥ 95 % as determined by SDS-PAGE.

Endotoxin

Please contact us for more information.

Formulation

Lyophilized from a 0.22 µm filtered solution of PBS, pH 7.4. Contact us for customized product form or formulation.

Reconstitution

Centrifuge the vial before opening. Reconstitute to a concentration of 0.1-0.5 mg/mL in sterile distilled water. Avoid vortex or vigorously pipetting the protein. For long term storage, it is recommended to add a carrier protein or stabilizer (e.g. 0.1% BSA, 5% HSA, 10% FBS or 5% Trehalose), and aliquot the reconstituted protein solution to minimize free-thaw cycles.

Contact



www.abclonal.com

Background

Cell surface heparan sulfate proteoglycans are composed of a membrane-associated protein core substituted with a variable number of heparan sulfate chains. Members of the glypican-related integral membrane proteoglycan family (GRIPS) contain a core protein anchored to the cytoplasmic membrane via a glycosyl phosphatidylinositol linkage. These proteins may play a role in the control of cell division and growth regulation.

Basic Information

Description

Recombinant Human Glypican-1/GPC1 Protein is produced by HEK293 cells expression system. The target protein is expressed with sequence (Asp24-Gln527) of human Glypican 1 (Accession #NP_002072.1) fused with a 6×His tag at the C-terminus.

Bio-Activity

Measured by its binding ability in a functional ELISA. Immobilized Human FGF2 at 1 µg/mL (100 µL/well) can bind Human Glypican 1 with a linear range of 2-80 ng/mL.

Shipping

The product is shipped at ambient temperature. Upon receipt, store it immediately at the temperature recommended below.

Operational Notes

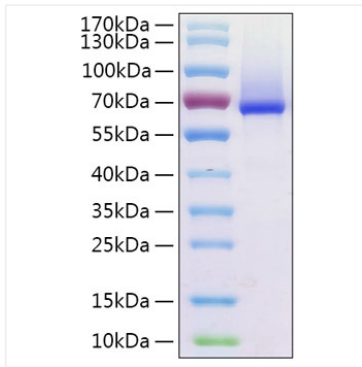
For your safety and health, please wear a lab coat and disposable gloves for handling.

Storage

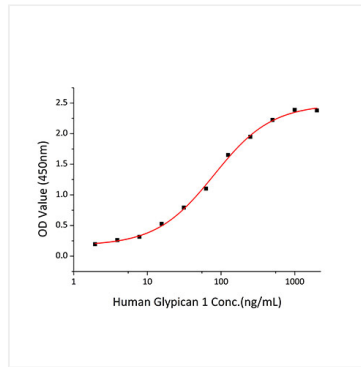
Store at -20°C. Store the lyophilized protein at -20°C to -80 °C up to 1 year from the date of receipt. After reconstitution, the protein solution is stable at -20°C for 3 months, at 2-8°C for up to 1 week. Avoid repeated freeze/thaw cycles.

* For your safety and health, please wear a lab coat and disposable gloves when handling.

Validation Data



Recombinant Human Glypican-1/GPC1 Protein was determined by SDS-PAGE under reducing conditions with Coomassie Blue.



Immobilized recombinant Human FGF2 at 1 $\mu\text{g/mL}$ (100 $\mu\text{L/well}$) can bind Human Glypican 1 with a linear range of 2-80ng/mL.