

RP00266

Leader in Biomolecular Solutions for Life Science



Recombinant Human SLAMF2/CD48 Protein

Catalog No.: RP00266 **Recombinant**

Sequence Information

Species	Gene ID	Swiss Prot
HEK293 cells	962	P09326

Tags

C-His

Synonyms

BCM1; BLAST; BLAST1; MEM-102;
SLAMF2; hCD48;
mCD48;CD48;BLAST;BLAST1;MEM-102;
SLAMF2;hCD48;mCD48

Product Information

Source

HEK293 cells

Purification

≥ 95 % as determined by SDS-PAGE; ≥ 90 % as determined by HPLC.

Endotoxin

< 0.1 EU/μg of the protein by LAL method.

Formulation

Lyophilized from a 0.22 μm filtered solution of PBS, pH 7.4. Contact us for customized product form or formulation.

Reconstitution

Centrifuge the vial before opening. Reconstitute to a concentration of 0.1-0.5 mg/mL in sterile distilled water. Avoid vortex or vigorously pipetting the protein. For long term storage, it is recommended to add a carrier protein or stabilizer (e.g. 0.1% BSA, 5% HSA, 10% FBS or 5% Trehalose), and aliquot the reconstituted protein solution to minimize free-thaw cycles.

Contact



www.abclonal.com

Background

This protein is a member of the CD2 subfamily of immunoglobulin-like receptors which includes SLAM (signaling lymphocyte activation molecules) proteins. The encoded protein is found on the surface of lymphocytes and other immune cells, dendritic cells and endothelial cells, and participates in activation and differentiation pathways in these cells. The encoded protein does not have a transmembrane domain, however, but is held at the cell surface by a GPI anchor via a C-terminal domain which maybe cleaved to yield a soluble form of the receptor. Multiple transcript variants encoding different isoforms have been found for this gene.

Basic Information

Description

Recombinant Human SLAMF2/CD48 Protein is produced by HEK293 cells expression system. The target protein is expressed with sequence (Gln27-Ser220) of human CD48/SLAMF2/BCM1 (Accession #NP_001769.2) fused with a 6×His tag at the C-terminus.

Bio-Activity

Measured by its binding ability in a functional ELISA. Immobilized recombinant human CD48 at 5 μg/mL (100 μL/well) can bind recombinant human CD244 with a linear range of 0.2-1 μg/mL.

Shipping

The product is shipped at ambient temperature. Upon receipt, store it immediately at the temperature recommended below.

Operational Notes

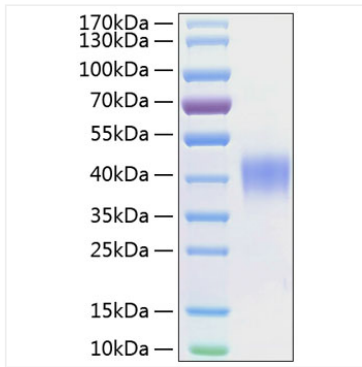
For your safety and health, please wear a lab coat and disposable gloves for handling.

Storage

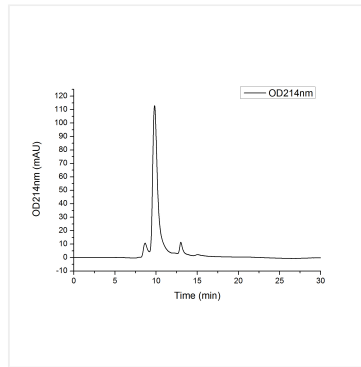
Store at -20°C. Store the lyophilized protein at -20°C to -80 °C up to 1 year from the date of receipt. After reconstitution, the protein solution is stable at -20°C for 3 months, at 2-8°C for up to 1 week. Avoid repeated freeze/thaw cycles.

* For your safety and health, please wear a lab coat and disposable gloves when handling.

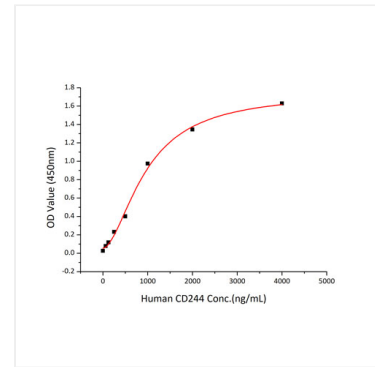
Validation Data



Recombinant Human SLAMF2/CD48 Protein was determined by SDS-PAGE under reducing conditions with Coomassie Blue.



The purity of Human CD48/SLAMF2/BCM1 Protein (Cat.RP00266) was greater than 90% as determined by SEC-HPLC.



Immobilized recombinant human CD48 at 5 $\mu\text{g/mL}$ (100 μL /well) can bind recombinant human CD244 with a linear range of 0.2-1 $\mu\text{g/mL}$.