

RP00149

Leader in Biomolecular Solutions for Life Science



Recombinant Human Kallikrein-11/KLK11 Protein

Catalog No.: RP00149 **Recombinant**

Sequence Information

Species	Gene ID	Swiss Prot
HEK293 cells	11012	Q9UBX7

Tags

C-His

Synonyms

KLK11;PRSS20;TLSP

Product Information

Source	Purification
HEK293 cells	≥ 90 % as determined by SDS-PAGE.

Endotoxin

< 0.1 EU/μg of the protein by LAL method.

Formulation

Lyophilized from a 0.22 μm filtered solution of 20mM Tris, 150mM NaCl, pH 8.0. Contact us for customized product form or formulation.

Reconstitution

Centrifuge the vial before opening. Reconstitute to a concentration of 0.1-0.5 mg/mL in sterile distilled water. Avoid vortex or vigorously pipetting the protein. For long term storage, it is recommended to add a carrier protein or stabilizer (e.g. 0.1% BSA, 5% HSA, 10% FBS or 5% Trehalose), and aliquot the reconstituted protein solution to minimize free-thaw cycles.

Contact



www.abclonal.com

Background

kallikrein-related peptidase 11 (KLK11), also known as hippostasin, trypsin-like serine protease and PRSS20, is a member of human tissue kallikrein family. It is a subgroup of serine proteases with diverse physiological functions, which is implicated in carcinogenesis and some have potential as novel cancer and other disease biomarkers. The KLK11 gene is one of the fifteen kallikrein subfamily members located in a cluster on chromosome 19. Two alternatively spliced forms exist, resulting in 250 (isoform 1) and 282 (isoform 2) amino acid sequences, respectively. Isoform 1 is predominantly expressed in brain whereas isoform 2 is preferentially expressed in prostate. KLK11 is a novel marker for ovarian and prostate cancer carcinomas. Recombinant human KLK11, after being activated by thermolysin, is active against a thioester substrate. This activity can be inhibited by AEBSF dichloroisocoumarin, and aprotinin.

Basic Information

Description

Recombinant Human Kallikrein-11/KLK11 Protein is produced by HEK293 cells expression system. The target protein is expressed with sequence (Met1-Asn250) of human KLK11/Kallikrein-11 (Accession #NP_006844.1) fused with a 6×His tag at the C-terminus.

Bio-Activity

Measured by its ability to cleave a colorimetric peptide substrate, N-carbobenzyloxy-Lys-ThioBenzyl ester (Z-Lys-SBzl), in the presence of 5,5'-Dithio-bis (2-nitrobenzoic acid) (DTNB). The specific activity is >141.40 pmol/min/μg.

Shipping

The product is shipped at ambient temperature. Upon receipt, store it immediately at the temperature recommended below.

Operational Notes

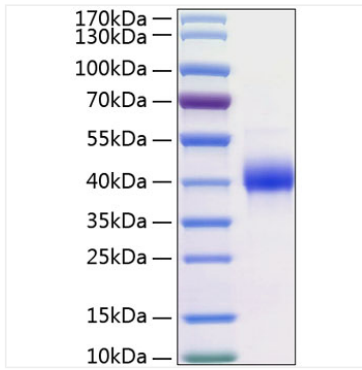
For your safety and health, please wear a lab coat and disposable gloves for handling.

Storage

Store at -20°C. Store the lyophilized protein at -20°C to -80°C up to 1 year from the date of receipt. After reconstitution, the protein solution is stable at -20°C for 3 months, at 2-8°C for up to 1 week. Avoid repeated freeze/thaw cycles.

* For your safety and health, please wear a lab coat and disposable gloves when handling.

Validation Data



Recombinant Human
Kallikrein-11/KLK11 Protein was
determined by SDS-PAGE under
reducing conditions with Coomassie
Blue.