

RP00100

Leader in Biomolecular Solutions for Life Science



Recombinant Human Cystatin-SN/CST1 Protein

Catalog No.: RP00100

Recombinant

Sequence Information

Species	Gene ID	Swiss Prot
HEK293 cells	1469	P01037

Tags

C-His

Synonyms

CST1

Background

The cystatin superfamily encompasses proteins that contain multiple cystatin-like sequences. Some of the members are active cysteine protease inhibitors, while others have lost or perhaps never acquired this inhibitory activity. There are three inhibitory families in the superfamily, including the type 1 cystatins (stefins), type 2 cystatins and the kininogens. The type 2 cystatin proteins are a class of cysteine proteinase inhibitors found in a variety of human fluids and secretions, where they appear to provide protective functions. The cystatin locus on chromosome 20 contains the majority of the type 2 cystatin genes and pseudogenes. This gene is located in the cystatin locus and encodes a cysteine proteinase inhibitor found in saliva, tears, urine, and seminal fluid.

Product Information

Source	Purification
HEK293 cells	≥ 95 % as determined by SDS-PAGE.

Endotoxin

< 0.1 EU/μg of the protein by LAL method.

Formulation

Lyophilized from a 0.22 μm filtered solution of PBS, pH 7.4. Contact us for customized product form or formulation.

Reconstitution

Centrifuge the vial before opening. Reconstitute to a concentration of 0.1-0.5 mg/mL in sterile distilled water. Avoid vortex or vigorously pipetting the protein. For long term storage, it is recommended to add a carrier protein or stabilizer (e.g. 0.1% BSA, 5% HSA, 10% FBS or 5% Trehalose), and aliquot the reconstituted protein solution to minimize free-thaw cycles.

Basic Information

Description

Recombinant Human Cystatin-SN/CST1 Protein is produced by HEK293 cells expression system. The target protein is expressed with sequence (Trp21-Ser141) of human Cystatin SN/CST1 (Accession #NP_001889.2) fused with a 6×His tag at the C-terminus.

Bio-Activity

Measured by its ability to inhibit active Cathepsin L cleavage of a fluorogenic peptide substrate Z-LR-AMC. The IC₅₀ value is <11.0 nM.

Shipping

The product is shipped at ambient temperature. Upon receipt, store it immediately at the temperature recommended below.

Operational Notes

For your safety and health, please wear a lab coat and disposable gloves for handling.

Storage

Store at -20°C. Store the lyophilized protein at -20°C to -80 °C up to 1 year from the date of receipt. After reconstitution, the protein solution is stable at -20°C for 3 months, at 2-8°C for up to 1 week. Avoid repeated freeze/thaw cycles.

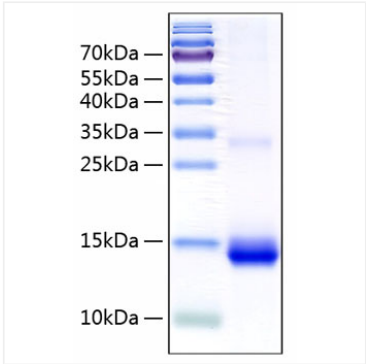
Contact



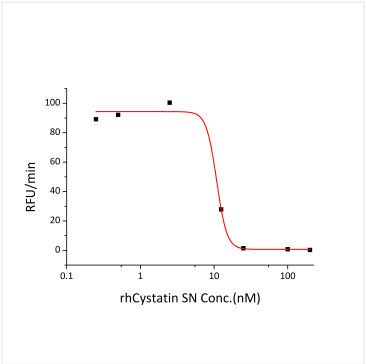
www.abclonal.com

* For your safety and health, please wear a lab coat and disposable gloves when handling.

Validation Data



Recombinant Human Cystatin-SN/CST1 Protein was determined by SDS-PAGE under reducing conditions with Coomassie Blue.



Recombinant human CST1 inhibits active Cathepsin L cleavage of a fluorogenic peptide substrate Z-LR-AMC (Catalog # ES008). The IC50 value is <11.0 nM.