

RP00062LQ

Leader in Biomolecular Solutions for Life Science



# Recombinant Human Bcl-2 Protein

Catalog No.: RP00062LQ **Recombinant**

## Sequence Information

Species	Gene ID	Swiss Prot
<i>E. coli</i>	596	P10415

### Tags

No tag

### Synonyms

BCL2; Bcl-2; PPP1R50; apoptosis regulator Bcl-2;Bcl-2;PPP1R50

## Product Information

### Source

*E. coli*

### Purification

≥ 95 % as determined by SDS-PAGE.

### Endotoxin

Please contact us for more information.

### Formulation

Supplied in 20mM Tris , 200mM NaCl , 30% Glycerol , 1mM DTT, pH 8.0Contact us for customized product form or formulation.

### Reconstitution

## Background

This protein is an integral outer mitochondrial membrane protein that blocks the apoptotic death of some cells such as lymphocytes. Constitutive expression of BCL2, such as in the case of translocation of BCL2 to Ig heavy chain locus, is thought to be the cause of follicular lymphoma.

## Basic Information

### Description

Recombinant Human Bcl-2 Protein is produced by *E. coli* expression system. The target protein is expressed with sequence (Ala2-Asp211) of human BCL2 (Accession #NP\_000624.2).

### Bio-Activity

Measured by its binding ability in a functional ELISA. Immobilized Human BCL-XL Protein at 2 µg/mL (100 µL/well) can bind BCL2 with a linear range of 3.9-421 ng/mL.

### Shipping

The product is shipped at ambient temperature. Upon receipt, store it immediately at the temperature recommended below.

### Operational Notes

For your safety and health, please wear a lab coat and disposable gloves for handling.

### Storage

Store at -70°C. This product is stable at ≤ -70°C for up to 1 year from the date of receipt. For optimal storage, aliquot into smaller quantities after centrifugation and store at recommended temperature. Avoid repeated freeze-thaw cycles. Avoid repeated freeze/thaw cycles.

## Contact

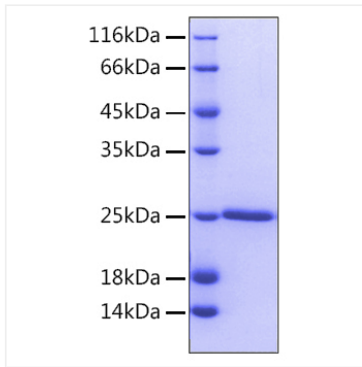


[www.abclonal.com](http://www.abclonal.com)

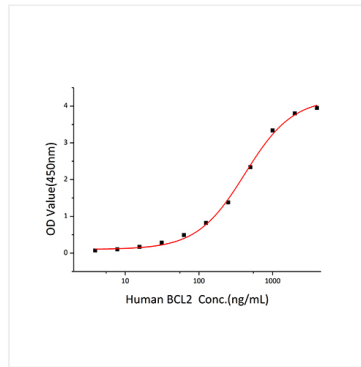
\* For your safety and health, please wear a lab coat and disposable gloves when handling.

## Validation Data

---



Recombinant Human Bcl-2 Protein was determined by SDS-PAGE under reducing conditions with Coomassie Blue.



Immobilized Human BCL-XL Protein at 2  $\mu\text{g/mL}$  (100  $\mu\text{L/well}$ ) can bind BCL2 with a linear range of 3.9-421 ng/mL.