

RP00020

Leader in Biomolecular Solutions for Life Science



Recombinant Human IL-36 beta/IL-1F8 Protein

Catalog No.: RP00020 **Recombinant**

Sequence Information

Species	Gene ID	Swiss Prot
<i>E. coli</i>	27177	Q9NZH7

Tags

C-His

Synonyms

FIL1;FIL1-(ETA);FIL1H;FIL1-(ETA);IL-1F8;IL-1H2;IL1-ETA;IL1F8;IL1H2;IL36B

Product Information

Source	Purification
<i>E. coli</i>	≥ 90 % as determined by SDS-PAGE.

Endotoxin

< 0.1 EU/μg of the protein by LAL method.

Formulation

Lyophilized from a 0.22 μm filtered solution of PBS, pH 7.4. Contact us for customized product form or formulation.

Reconstitution

Centrifuge the vial before opening. Reconstitute to a concentration of 0.1-0.5 mg/mL in sterile distilled water. Avoid vortex or vigorously pipetting the protein. For long term storage, it is recommended to add a carrier protein or stabilizer (e.g. 0.1% BSA, 5% HSA, 10% FBS or 5% Trehalose), and aliquot the reconstituted protein solution to minimize free-thaw cycles.

Contact



www.abclonal.com

Background

Interleukin-1 family member 8 (IL1F8) also known as IL36B, is a member of the interleukin 1 (IL-1) cytokine family. IL-36 beta is expressed by keratinocytes, naïve CD4+ T cells, neurons, and glia. It is up-regulated in keratinocytes and synovial fibroblasts by inflammatory stimulation and in psoriatic lesions. IL-36 beta promotes inflammatory responses by enhancing the activation and Th1 polarization of dendritic cells and T cells. It also enhances the production of multiple pro-inflammatory cytokines, chemokines, and anti-bacterial defensin peptides by keratinocytes, synovial fibroblasts, and articular chondrocytes. IL-1 family members exert their effects through binding to receptors that belong to the IL-1 receptor (IL-1R) family.

Basic Information

Description

Recombinant Human IL-36 beta/IL-1F8 Protein is produced by *E. coli* expression system. The target protein is expressed with sequence (Arg5-Glu157) of human IL-36 beta (Accession #NP_775270.1) fused with a 6×His tag at the C-terminus.

Bio-Activity

Shipping

The product is shipped at ambient temperature. Upon receipt, store it immediately at the temperature recommended below.

Operational Notes

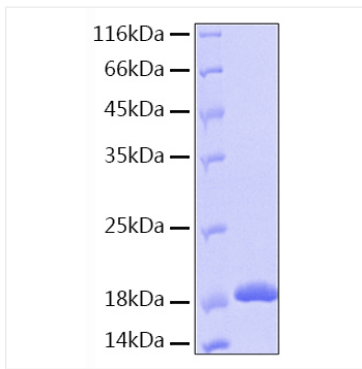
For your safety and health, please wear a lab coat and disposable gloves for handling.

Storage

Store at -20°C. Store the lyophilized protein at -20°C to -80 °C up to 1 year from the date of receipt. After reconstitution, the protein solution is stable at -20°C for 3 months, at 2-8°C for up to 1 week. Avoid repeated freeze/thaw cycles.

* For your safety and health, please wear a lab coat and disposable gloves when handling.

Validation Data



Recombinant Human IL-36
beta/IL-1F8 Protein was determined
by SDS-PAGE under reducing
conditions with Coomassie Blue.