

RMK0514

Leader in Biomolecular Solutions for Life Science



# Rabbit anti-Human Interleukin 18 Binding Protein/IL-18BP mAb

Catalog No.: RMK0514

## Basic Information

### Catagory

Matched Antibody Pair

### Applications

ELISA

## Product Information

### Ig Type

Rabbit IgG

### Purification

Affinity purification

### Endotoxin Level

### Storage

Store unopened kit at 2-8 °C for 1 week. If more than one week, please keep the components of the kit according to the instructions. Do not use past kit expiration date.

**Avoid repeated freeze-thaw cycles.**

### Formulation

Supplied as a 0.2µm filtered solution in PBS with 0.05% Proclin300, PH 7.4.

## Contact



[www.abclonal.com](http://www.abclonal.com)

## Background

The protein encoded by this gene functions as an inhibitor of the proinflammatory cytokine, IL18. It binds IL18, prevents the binding of IL18 to its receptor, and thus inhibits IL18-induced IFN-gamma production, resulting in reduced T-helper type 1 immune responses. This protein is constitutively expressed and secreted in mononuclear cells. Elevated level of this protein is detected in the intestinal tissues of patients with Crohn's disease. Alternatively spliced transcript variants encoding different isoforms have been described for this gene.

## Immunogen Information

### Immunogen

Recombinant Human Interleukin 18 Binding Protein/IL-18BP protein

## Cross-Reactivity

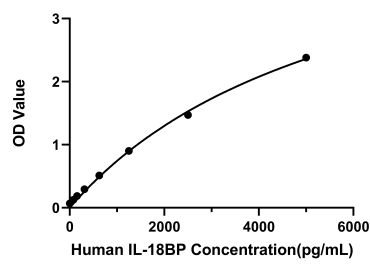
/

## Assay Applications

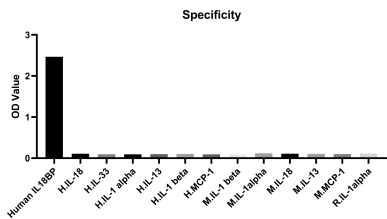
Human Interleukin 18 Binding Protein/IL-18BP Sandwich Immunoassay

		Recommended Concentration	Sample
ELISA	Capture	2-8ug/mL	Rabbit anti-Human Interleukin 18 Binding Protein/IL-18BP mAb(Cat. No.RMK0513)
	Detection	0.025-0.1ug/mL	Rabbit anti-Human Interleukin 18 Binding Protein/IL-18BP mAb(Cat. No.RMK0514)
	Standard	78.13-5000pg/mL	Recombinant Human IL-18BP Protein(Cat. No.RP00162)

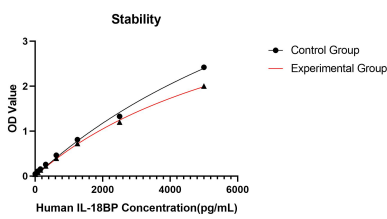
Validation Data



This standard curve is only for demonstration purposes. A standard curve should be generated for each assay.



No significant cross-reactivity or interference was observed.



Placed at 37°C for 7 days, the stability of the standard curve all conform to CV <10%.