

RM18054

Leader in Biomolecular Solutions for Life Science



Rabbit anti-Human EN-RAGE/S100A12 mAb(DET)

Catalog No.: RM18054

Basic Information

Catagory

Matched Antibody Pair

Applications

ELISA

Product Information

Ig Type

Rabbit IgG

Purification

Affinity purification

Endotoxin Level

Storage

Store unopened kit at 2-8 °C for 1 week. If more than one week, please keep the components of the kit according to the instructions. Do not use past kit expiration date.

Avoid repeated freeze-thaw cycles.

Formulation

Supplied as a 0.2um filtered solution in PBS with 0.05%ProClin 300, PH 7.4.

Contact



www.abclonal.com

Background

The protein encoded by this gene is a member of the S100 family of proteins containing 2 EF-hand calcium-binding motifs. S100 proteins are localized in the cytoplasm and/or nucleus of a wide range of cells, and involved in the regulation of a number of cellular processes such as cell cycle progression and differentiation. S100 genes include at least 13 members which are located as a cluster on chromosome 1q21. This protein is proposed to be involved in specific calcium-dependent signal transduction pathways and its regulatory effect on cytoskeletal components may modulate various neutrophil activities. The protein includes an antimicrobial peptide which has antibacterial activity.

Immunogen Information

Immunogen

Recombinant Human EN-RAGE/S100A12

Cross-Reactivity

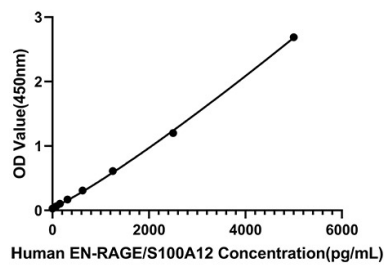
/

Assay Applications

Human EN-RAGE/S100A12 Sandwich ELISA Immunoassay

| | Recommended Concentration | Sample |
|-----------------|---------------------------|--|
| ELISA Capture | 1-4ug/mL | Rabbit anti-Human EN-RAGE/S100A12 (CAP)(Cat. No.RM18053) |
| ELISA Detection | 0.0625-0.25ug/mL | Rabbit anti-Human EN-RAGE/S100A12 (DET)(Cat. No.RM18054) |
| Standard | 78.13-5000pg/mL | Recombinant Human EN-RAGE/S100A12 Protein(Cat. No.RP00009) |

Validation Data



This standard curve is only for demonstration purposes. A standard curve should be generated for each assay.