

RM17919

Leader in Biomolecular Solutions for Life Science



Rabbit anti-Human YKL-40/CHI3L1 mAb

Catalog No.: RM17919

Basic Information

Catagory

Matched Antibody Pair

Applications

ELISA

Product Information

Ig Type

Rabbit IgG

Purification

Affinity purification

Endotoxin Level

Storage

Store unopened kit at 2-8 °C for 1 week. If more than one week, please keep the components of the kit according to the instructions. Do not use past kit expiration date.

Avoid repeated freeze-thaw cycles.

Formulation

Supplied as a 0.2um filtered solution in PBS with 0.05%ProClin 300,PH 7.4.

Contact



www.abclonal.com

Background

Chitinases catalyze the hydrolysis of chitin, which is an abundant glycopolymer found in insect exoskeletons and fungal cell walls. The glycoside hydrolase 18 family of chitinases includes eight human family members. This gene encodes a glycoprotein member of the glycosyl hydrolase 18 family. The protein lacks chitinase activity and is secreted by activated macrophages, chondrocytes, neutrophils and synovial cells. The protein is thought to play a role in the process of inflammation and tissue remodeling.

Immunogen Information

Immunogen

Recombinant Human YKL-40/CHI3L1 Protein

Cross-Reactivity

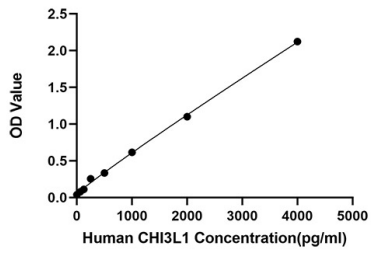
/

Assay Applications

Human YKL-40/CHI3L1 Sandwich ELISA/Multiplex

		Recommended Concentration	Sample
ELISA	Capture	0.5-2ug/mL	Rabbit anti-Human YKL-40/CHI3L1 mAb(Cat. No.RM17919)
	Detection	0.025-0.1ug/mL	Rabbit anti-Human YKL-40/CHI3L1 mAb(Cat. No.RM17920)
	Standard	62.5-4000pg/mL	Recombinant Human YKL-40/CHI3L1 Protein(Cat. No.RP01355)
Multiplex	Capture	3-20ug/mL	Rabbit anti-Human YKL-40/CHI3L1 mAb(Cat. No.RMK0247)
	Detection	0.017-2ug/mL	Rabbit anti-Human YKL-40/CHI3L1 mAb(Cat. No.RM17919)
	Standard	6.86-5000pg/mL	Recombinant Human YKL-40/CHI3L1 Protein

Validation Data



This standard curve is only for demonstration purposes. A standard curve should be generated for each assay.