

RM17757

Leader in Biomolecular Solutions for Life Science



Rabbit anti-Mouse IL-12 p70 mAb

Catalog No.: RM17757

Basic Information

Catagory

Matched Antibody Pair

Applications

ELISA,Multiplex

Product Information

Ig Type

Rabbit IgG

Purification

Affinity purification

Endotoxin Level

Storage

Store unopened kit at 2-8 °C for 1 week. If more than one week, please keep the components of the kit according to the instructions. Do not use past kit expiration date.

Avoid repeated freeze-thaw cycles.

Formulation

Supplied as a 0.2umfiltered solution in PBS with 0.1% BSA, pH 7.4 containing Mouse IL-12 Antibody.

Contact



www.abclonal.com

Background

IL-12 is a heterodimeric cytokine composed of p40 and p35 subunits and is considered a largely pro-inflammatory cytokine. It is naturally produced by dendritic cells, macrophages, neutrophils, and human B-lymphoblastoid cells. IL-12 is crucial for the recruitment and effector functions of CD8+ T and NK cells.

Immunogen Information

Immunogen

Recombinant Mouse IL-12 Protein

Cross-Reactivity

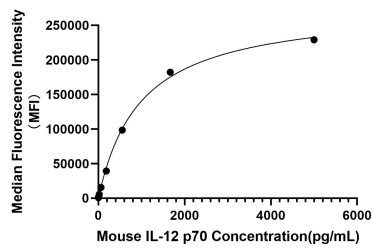
Has cross-reactivity in ELISA with mIL-23, mIL-12p40. No cross-reactivity in ELISA assay with recombinant mIL-4, mTNF- α , mIFN γ , mIL-6, mIL-2, mIL-9, mVEGF, mIL-10, mIL-18, mIL-13, mLeptin, mGM-CSF, hIL-12p40, hIL-12p70, hIL-23

Assay Applications

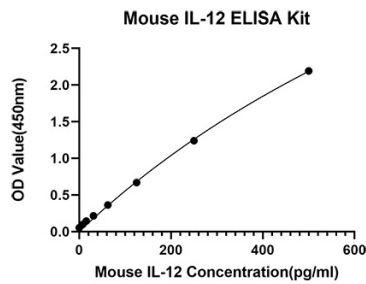
Mouse IL-12 Multiplex/ELISA

| | | Recommended Concentration | Sample |
|-----------|-----------|---------------------------|------------------------------------------|
| Multiplex | Capture | 3-20ug/mL | Rabbit anti-Mouse IL-12(RM17756) |
| | Detection | 0.017-2ug/mL | Rabbit anti-Mouse IL-12(RM17757) |
| | Standard | 6.86-5000pg/mL | Recombinant Mouse IL-12 Protein(RP01691) |
| ELISA | Capture | 2-8ug/mL | Rabbit anti-Mouse IL-12(RM17756) |
| | Detection | 0.05-0.2ug/mL | Rabbit anti-Mouse IL-12(RM17757) |
| | Standard | 7.82-500pg/mL | Recombinant Mouse IL-12 Protein(RP01691) |

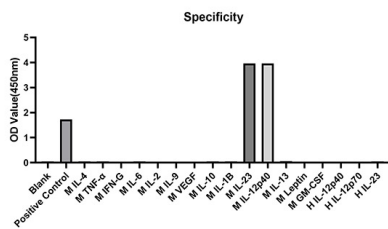
Validation Data



This standard curve is only for demonstration purposes. A standard curve should be generated for each assay.



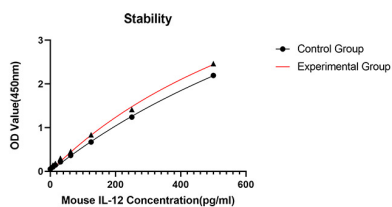
This standard curve is only for demonstration purposes. A standard curve should be generated for each assay.



From the comparison of the standard curve, it is found that ABclonal has high sensitivity.



No significant cross-reactivity or interference was observed.



Placed at 37°C for 3 days, the stability of the standard curve all conform to CV <10%.