

AT0003

Leader in Biomolecular Solutions for Life Science



PE Streptavidin

Catalog No.: AT0003

Basic Information

Observed MW

Calculated MW

Category

ABflo Flow Cytometry Antibody

Applications

FC

Cross-Reactivity

Species independent

CloneNo number

Streptavidin-PE

Conjugate

PE. Ex:565nm. Em:574nm.

Background

Streptavidin binds to biotin with high affinity. Streptavidin-ABflo® 488 is useful for detecting biotinylated antibodies.

Recommended Dilutions

FC 5 µl per 10⁶ cells in
 100 µl volume

Immunogen Information

Gene ID

Swiss Prot

Immunogen

This information is considered to be commercially sensitive.

Synonyms

SA V1; SA V2

Contact

 www.abclonal.com

Product Information

Source

Isotype

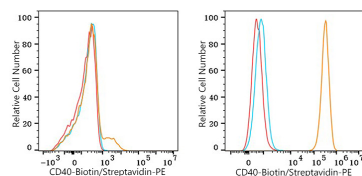
Purification

Storage

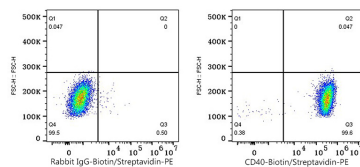
Store at 2-8°C. Avoid freeze.

Buffer: PBS with 0.03% proclin300,0.2% BSA,pH7.3.

Validation Data



Flow cytometry: 1×10^6 Jurkat cells (negative control, left) and U-2 OS cells (right) were surface-stained with Biotin Rabbit anti-Human CD40 mAb (A25703, 2 $\mu\text{g/mL}$, orange line) or Biotin Rabbit IgG isotype control (A25626, 2 $\mu\text{g/mL}$, blue line), followed by PE Streptavidin (AT0003, 5 $\mu\text{l/Test}$) staining. Non-fluorescently stained cells were used as blank control (red line).



Flow cytometry: 1×10^6 U-2 OS cells were surface-stained with Biotin Rabbit IgG isotype control (A25626, 2 $\mu\text{g/mL}$, blue line) or Biotin Rabbit anti-Human CD40 mAb (A25703, 2 $\mu\text{g/mL}$, right), followed by PE Streptavidin (AT0003, 5 $\mu\text{l/Test}$) staining.