

AS141

Leader in Biomolecular Solutions for Life Science



## PE Rabbit anti-Mouse IgG (H+L) mAb

Catalog No.: AS141

### Basic Information

#### Observed MW

#### Calculated MW

36kDa

#### Category

Monoclonal Antibody

#### Applications

FC

#### Cross-Reactivity

Mouse

#### Conjugate

PE. Ex:565nm. Em:574nm.

### Background

### Recommended Dilutions

FC 5  $\mu$ l per  $10^6$  cells in  
100  $\mu$ l volume

### Immunogen Information

#### Gene ID

#### Swiss Prot

P01863

#### Immunogen

Recombinant protein of mouse IgG2a.

#### Synonyms

### Contact



[www.abclonal.com](http://www.abclonal.com)

### Product Information

#### Source

Rabbit

#### Isotype

IgG

#### Purification

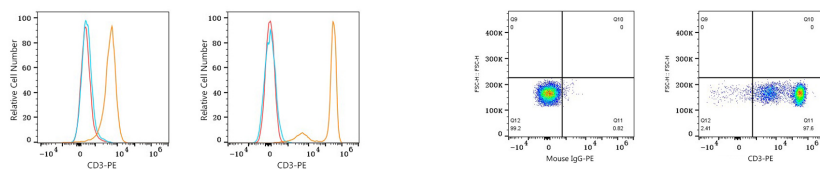
Affinity purification

#### Storage

Store at 2-8°C. Avoid freeze.

Buffer: PBS with 0.09% Sodium azide, 0.2% BSA, pH7.3.

## Validation Data



Flow cytometry:  $1 \times 10^6$  Raji cells (negative control, left) and Human PBMC (right) were surface-stained with Mouse anti Human CD3 mAb ( $2 \mu\text{g/mL}$ , orange line) or Mouse IgG isotype control ( $2 \mu\text{g/mL}$ , blue line), followed by PE Rabbit anti-Mouse IgG (H+L) mAb (AS141,  $5 \mu\text{l/Test}$ ) staining. Non-fluorescently stained cells were used as blank control (red line).

Flow cytometry:  $1 \times 10^6$  Human PBMC were surface-stained with Mouse IgG isotype control ( $2 \mu\text{g/mL}$ , left) or Mouse anti Human CD3 mAb ( $2 \mu\text{g/mL}$ , right), followed by PE Rabbit anti-Mouse IgG (H+L) mAb (AS141,  $5 \mu\text{l/Test}$ ) staining.