

AS092

Leader in Biomolecular Solutions for Life Science



# HRP-conjugated Rabbit anti-Human IgG1 (Fc) mAb

Catalog No.: AS092

## Basic Information

### Observed MW

50 kDa

### Calculated MW

### Category

Secondary Antibody

### Applications

WB, ELISA

### Cross-Reactivity

Human

### CloneNo number

ARC53385-HRP

### Conjugate

HRP

## Recommended Dilutions

**WB** 1:2000 - 1:30000

**ELISA** 1:5000-1:10000

## Contact



[www.abclonal.com](http://www.abclonal.com)

## Background

Secondary antibodies are affinity-purified antibodies which will work with target-specific primary antibody in the detection, sorting or purification of its specified target. Secondary antibodies offer increased versatility enabling users to use many detection systems (e.g. HRP, AP, fluorescence). They can also provide greater sensitivity through signal amplification as multiple secondary antibodies. Most commonly, secondary antibodies are generated by immunizing the host animal (different from host species of primary antibody) with a pooled population of normal immunoglobulins from the host species of primary antibody and can be further purified and modified (i.e. antibody fragmentation, label conjugation, etc.) to ensure well-characterized specificity to corresponding normal immunoglobulins.

## Immunogen Information

### Gene ID

### Swiss Prot

### Immunogen

This information is considered to be commercially sensitive. The antibody may cross-react with immunoglobulins from other species.

### Synonyms

## Product Information

### Source

Rabbit

### Isotype

Horseradish peroxidase  
conjugated IgG

### Purification

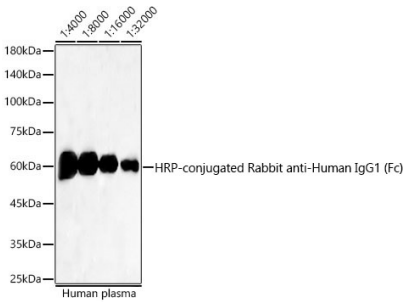
Affinity purification

### Storage

Store at -20°C. Avoid freeze / thaw cycles.

Buffer: PBS containing 50% glycerol and 0.2% BSA, preserved with proclin300 or sodium azide (as specified on the Certificate of Analysis), pH 7.3

# Validation Data



Western blot analysis of vlysates from Human plasma using HRP-conjugated Rabbit anti-Human IgG1 (Fc) mAb (AS092) at 1:4000-1:32000 dilution.  
Lysates/proteins: 25 µg per lane.  
Blocking buffer: 3% nonfat dry milk in TBST.  
Detection: ECL Basic Kit (RM00020).  
Exposure time: 30 s.