

AP1574

Leader in Biomolecular Solutions for Life Science



Phospho-PLC gamma 2 (PLCG2)-Y1217 Rabbit mAb

Catalog No.: AP1574 **Recombinant**

Basic Information

Observed MW

150kDa

Calculated MW

148kDa

Category

SMab Recombinant Monoclonal
Antibody

Applications

WB,IF/ICC,ELISA

Cross-Reactivity

Human

Background

The protein encoded by this gene is a transmembrane signaling enzyme that catalyzes the conversion of 1-phosphatidyl-1D-myo-inositol 4,5-bisphosphate to 1D-myo-inositol 1,4,5-trisphosphate (IP3) and diacylglycerol (DAG) using calcium as a cofactor. IP3 and DAG are second messenger molecules important for transmitting signals from growth factor receptors and immune system receptors across the cell membrane. Mutations in this gene have been found in autoinflammation, antibody deficiency, and immune dysregulation syndrome and familial cold autoinflammatory syndrome 3.

Recommended Dilutions

WB 1:5000 - 1:30000

IF/ICC 1:100 - 1:400

ELISA Recommended starting concentration is 1 µg/mL. Please optimize the concentration based on your specific assay requirements.

Immunogen Information

Gene ID

5336

Swiss Prot

P16885

Immunogen

Synthetic peptide. This information is considered to be commercially sensitive.

Synonyms

FCAS3; APLAID; PLC-IV; PLC-gamma-2

Contact

 www.abclonal.com

Product Information

Source

Rabbit

Isotype

IgG

Purification

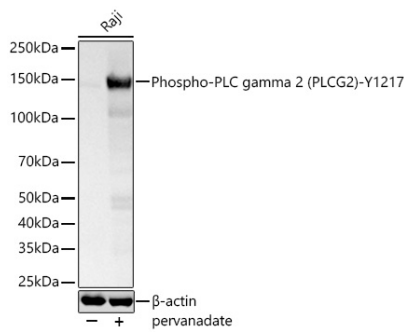
Affinity purification

Storage

Store at -20°C. Avoid freeze / thaw cycles.

Buffer: PBS with 0.09% Sodium azide,0.05% BSA,50% glycerol,pH7.3.

Validation Data



Western blot analysis of lysates from Raji cells using Phospho-PLC gamma 2 (PLCG2)-Y1217 Rabbit mAb (AP1574) at 1:5000 dilution incubated at room temperature for 1.5 hours. Raji cells were treated by pervanadate (1 mM) at 37°C for 30 minutes after serum-starvation overnight.

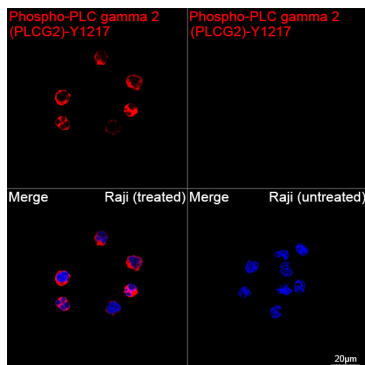
Secondary antibody: HRP-conjugated Goat anti-Rabbit IgG (H+L) (AS014) at 1:10000 dilution.

Lysates/proteins: 30 µg per lane.

Blocking buffer: 3 % nonfat dry milk in TBST.

Detection: ECL Basic Kit (RM00020).

Exposure time: 1s.



Confocal imaging of Raji cells (treated with pervanadate) and Raji cells (untreated) using Phospho-PLC gamma 2 (PLCG2)-Y1217 Rabbit mAb (AP1574, dilution 1:200) followed by a further incubation with Cy3 Goat Anti-Rabbit IgG (H+L) (AS007, dilution 1:500) (Red). DAPI was used for nuclear staining (Blue). Objective: 100x.