

AP1341

Leader in Biomolecular Solutions for Life Science



Phospho-GSK3 α -S21 + GSK3 β -S9 Rabbit mAb

Catalog No.: AP1341

Recombinant

2 Publications

Basic Information

Observed MW

51kDa/46kDa

Calculated MW

51kDa/46kDa

Category

SMab Recombinant Monoclonal
Antibody

Applications

WB, ELISA

Cross-Reactivity

Mouse

CloneNo number

ARC54771

Background

The protein encoded by this gene is a serine-threonine kinase, belonging to the glycogen synthase kinase subfamily. It is involved in energy metabolism, neuronal cell development, and body pattern formation. Polymorphisms in this gene have been implicated in modifying risk of Parkinson disease, and studies in mice show that overexpression of this gene may be relevant to the pathogenesis of Alzheimer disease. Alternatively spliced transcript variants encoding different isoforms have been found for this gene.

Recommended Dilutions

WB 1:500 - 1:1000

ELISA Recommended starting concentration is 1 μ g/mL. Please optimize the concentration based on your specific assay requirements.

Immunogen Information

Gene ID

2931/2932

Swiss Prot

P49840/P49841

Immunogen

Synthetic peptide. This information is considered to be commercially sensitive.

Synonyms

GSK3B; GSK 3 beta; GSK3A; GSK 3 alpha; Phospho-GSK3 α -S21 + GSK3 β -S9

Contact



www.abclonal.com

Product Information

Source

Rabbit

Isotype

IgG

Purification

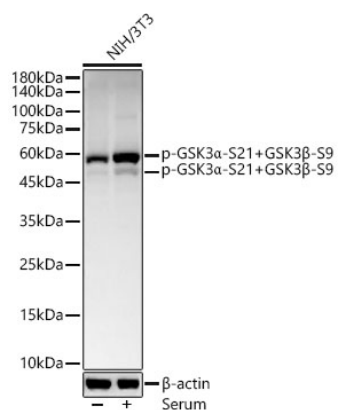
Affinity purification

Storage

Store at -20°C. Avoid freeze / thaw cycles.

Buffer: PBS containing 50% glycerol and 0.05% BSA, preserved with proclin300 or sodium azide (as specified on the Certificate of Analysis), pH 7.3.

Validation Data



Western blot analysis of lysates from NIH/3T3 cells, using Phospho-GSK3α-S21+GSK3β-S9 Rabbit mAb (AP1341) at 1:800 dilution. NIH/3T3 cells were treated with 10% FBS at 37°C for 30 minutes after serum-starvation overnight.

Secondary antibody: HRP-conjugated Goat anti-Rabbit IgG (H+L) (AS014) at 1:10000 dilution.

Lysates/proteins: 25μg per lane.

Blocking buffer: 3% nonfat dry milk in TBST.

Detection: ECL Basic Kit (RM00020).

Exposure time: 30s.