

AP1308

Leader in Biomolecular Solutions for Life Science



# Phospho-MDM2-S166 Rabbit mAb

Catalog No.: AP1308 **Recombinant**

## Basic Information

### Observed MW

Refer to figures

### Calculated MW

55kDa

### Category

SMab Recombinant Monoclonal  
Antibody

### Applications

IHC-P,ELISA

### Cross-Reactivity

Human,Mouse,Rat

### CloneNo number

ARC2909

## Background

This gene encodes a nuclear-localized E3 ubiquitin ligase. The encoded protein can promote tumor formation by targeting tumor suppressor proteins, such as p53, for proteasomal degradation. This gene is itself transcriptionally-regulated by p53. Overexpression or amplification of this locus is detected in a variety of different cancers. There is a pseudogene for this gene on chromosome 2. Alternative splicing results in a multitude of transcript variants, many of which may be expressed only in tumor cells.

## Recommended Dilutions

IHC-P 1:20 - 1:200|ELISA

## Immunogen Information

### Gene ID

4193

### Swiss Prot

Q00987

### Immunogen

Synthetic peptide. This information is considered to be commercially sensitive.

### Synonyms

HDMX; LSKB; hdm2; ACTFS; Phospho-MDM2-S166

## Contact

 [www.abclonal.com](http://www.abclonal.com)

## Product Information

### Source

Rabbit

### Isotype

IgG

### Purification

Affinity purification

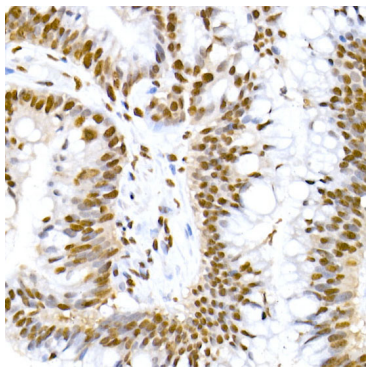
### Storage

Store at -20°C. Avoid freeze / thaw cycles.

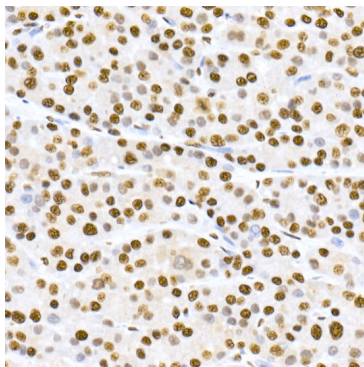
Buffer: PBS containing 50% glycerol and 0.05% BSA, preserved with proclin300 or sodium azide (as specified on the Certificate of Analysis), pH 7.3.

## Validation Data

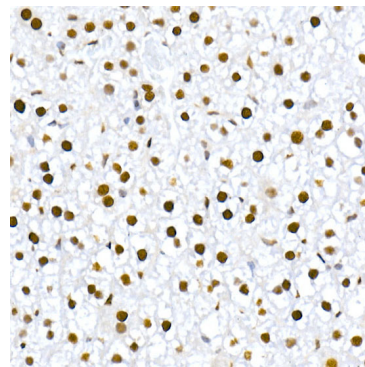
---



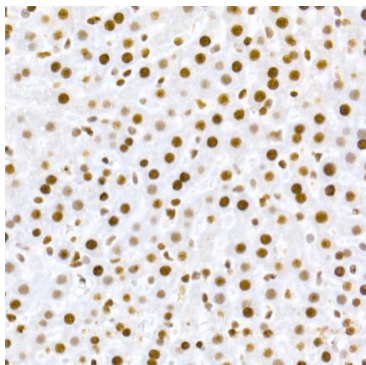
Immunohistochemistry analysis of paraffin-embedded Human colon carcinoma using Phospho-MDM2-S166 Rabbit mAb (AP1308) at dilution of 1:20 (40x lens). High pressure antigen retrieval performed with 0.01M Citrate buffer (pH 6.0) prior to IHC staining.



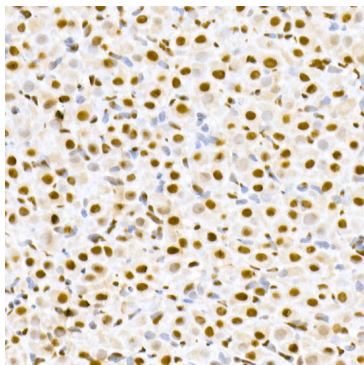
Immunohistochemistry analysis of paraffin-embedded Human liver cancer using Phospho-MDM2-S166 Rabbit mAb (AP1308) at dilution of 1:20 (40x lens). High pressure antigen retrieval performed with 0.01M Citrate buffer (pH 6.0) prior to IHC staining.



Immunohistochemistry analysis of paraffin-embedded Mouse liver using Phospho-MDM2-S166 Rabbit mAb (AP1308) at dilution of 1:20 (40x lens). High pressure antigen retrieval performed with 0.01M Citrate buffer (pH 6.0) prior to IHC staining.



Immunohistochemistry analysis of paraffin-embedded Rat liver using Phospho-MDM2-S166 Rabbit mAb (AP1308) at dilution of 1:20 (40x lens). High pressure antigen retrieval performed with 0.01M Citrate buffer (pH 6.0) prior to IHC staining.



Immunohistochemistry analysis of paraffin-embedded Rat ovary using Phospho-MDM2-S166 Rabbit mAb (AP1308) at dilution of 1:20 (40x lens). High pressure antigen retrieval performed with 0.01M Citrate buffer (pH 6.0) prior to IHC staining.