

AP1230

Leader in Biomolecular Solutions for Life Science



Phospho-RIPK1/RIP-S166 Rabbit pAb

Catalog No.: AP1230 **7 Publications**

Basic Information

Observed MW

75kDa

Calculated MW

76kDa

Category

Polyclonal Antibody

Applications

WB,ELISA

Cross-Reactivity

Human,Mouse

Background

This gene encodes a member of the receptor-interacting protein (RIP) family of serine/threonine protein kinases. The encoded protein plays a role in inflammation and cell death in response to tissue damage, pathogen recognition, and as part of developmental regulation. RIPK1/RIPK3 kinase-mediated necrosis is referred to as necroptosis. Genetic disruption of this gene in mice results in death shortly after birth.

Recommended Dilutions

WB 1:500 - 1:1000

ELISA Recommended starting concentration is 1 µg/mL. Please optimize the concentration based on your specific assay requirements.

Immunogen Information

Gene ID

8737

Swiss Prot

Q13546

Immunogen

A synthetic phosphorylated peptide around S166 of human RIPK1/RIP (NP_003795.2).

Synonyms

RIP; RIP1; AIEFL; IMD57; RIP-1; Phospho-RIPK1/RIP-S166

Contact

 www.abclonal.com

Product Information

Source

Rabbit

Isotype

IgG

Purification

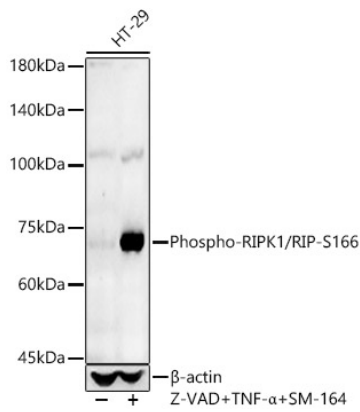
Affinity purification

Storage

Store at -20°C. Avoid freeze / thaw cycles.

Buffer: PBS with 0.09% Sodium azide,50% glycerol,pH7.3.

Validation Data



Western blot analysis of lysates from HT-29 cells, using Phospho-RIPK1/RIP-S166 Rabbit pAb (AP1230) at 1:800 dilution. HT-29 cells were treated with Z-VAD (50 μ M), human TNF- α (50ng/ml) and SM-164 (200nM) at 37°C for 5 hour.
Secondary antibody: HRP-conjugated Goat anti-Rabbit IgG (H+L) (AS014) at 1:10000 dilution.

Lysates/proteins: 25 μ g per lane.

Blocking buffer: 3% nonfat dry milk in TBST.

Detection: ECL Basic Kit (RM00020).

Exposure time: 60s.