

AP1166

Leader in Biomolecular Solutions for Life Science



Phospho-CDC25A-S76 Rabbit pAb

Catalog No.: AP1166

Basic Information

Observed MW

59kDa

Calculated MW

59kDa

Category

Polyclonal Antibody

Applications

WB,ELISA

Cross-Reactivity

Human,Mouse,Rat

Background

CDC25A is a member of the CDC25 family of phosphatases. CDC25A is required for progression from G1 to the S phase of the cell cycle. It activates the cyclin-dependent kinase CDC2 by removing two phosphate groups. CDC25A is specifically degraded in response to DNA damage, which prevents cells with chromosomal abnormalities from progressing through cell division. CDC25A is an oncogene, although its exact role in oncogenesis has not been demonstrated. Two transcript variants encoding different isoforms have been found for this gene.

Recommended Dilutions

WB 1:500 - 1:2000

ELISA Recommended starting concentration is 1 µg/mL. Please optimize the concentration based on your specific assay requirements.

Immunogen Information

Gene ID

993

Swiss Prot

P30304

Immunogen

Synthetic peptide. This information is considered to be commercially sensitive.

Synonyms

CDC25A2; Phospho-CDC25A-S76

Contact

 www.abclonal.com

Product Information

Source

Rabbit

Isotype

IgG

Purification

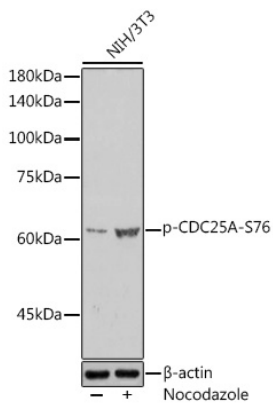
Affinity purification

Storage

Store at -20°C. Avoid freeze / thaw cycles.

Buffer: PBS with 0.01% thimerosal, 50% glycerol, pH7.3.

Validation Data



Western blot analysis of lysates from NIH/3T3 cells, using Phospho-CDC25A-S76 Rabbit pAb (AP1166) at 1:1000 dilution. NIH/3T3 cells were treated with Nocodazole (50 ng/ml) at 37°C for 20 hours.

Secondary antibody: HRP-conjugated Goat anti-Rabbit IgG (H+L) (AS014) at 1:10000 dilution.

Lysates/proteins: 25µg per lane.

Blocking buffer: 3% BSA.

Detection: ECL Enhanced Kit (RM00021).

Exposure time: 180s.