

AP1153

Leader in Biomolecular Solutions for Life Science



Phospho-Cdc6-S54 Rabbit mAb

Catalog No.: AP1153

Recombinant

2 Publications

Basic Information

Observed MW

63kDa

Calculated MW

63kDa

Category

SMab Recombinant Monoclonal
Antibody

Applications

WB,ELISA

Cross-Reactivity

Mouse

CloneNo number

ARC1693

Background

The protein encoded by this gene is highly similar to *Saccharomyces cerevisiae* Cdc6, a protein essential for the initiation of DNA replication. This protein functions as a regulator at the early steps of DNA replication. It localizes in cell nucleus during cell cycle G1, but translocates to the cytoplasm at the start of S phase. The subcellular translocation of this protein during cell cycle is regulated through its phosphorylation by Cdk. Transcription of this protein was reported to be regulated in response to mitogenic signals through transcriptional control mechanism involving E2F proteins.

Recommended Dilutions

WB 1:1000 - 1:6000

ELISA Recommended starting concentration is 1 µg/mL. Please optimize the concentration based on your specific assay requirements.

Immunogen Information

Gene ID
990

Swiss Prot
Q99741

Immunogen

Synthetic peptide. This information is considered to be commercially sensitive.

Synonyms

CDC18L; HsCDC6; MGORS5; HsCDC18; Phospho-Cdc6-S54

Contact

 www.abclonal.com

Product Information

Source
Rabbit

Isotype
IgG

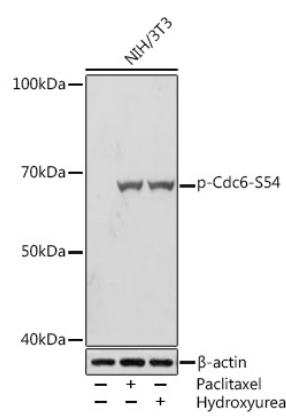
Purification
Affinity purification

Storage

Store at -20°C. Avoid freeze / thaw cycles.

Buffer: PBS with 0.02% sodium azide, 0.05% BSA, 50% glycerol, pH7.3.

Validation Data



Western blot analysis of lysates from NIH/3T3 cells, using Phospho-Cdc6-S54 Rabbit mAb (AP1153) at 1:1000 dilution. NIH/3T3 cells were treated with Paclitaxel (1 uM) at 37°C for 20 hours. NIH/3T3 cells were treated with Hydroxyurea (4 mM) at 37°C for 20 hours.

Secondary antibody: HRP-conjugated Goat anti-Rabbit IgG (H+L) (AS014) at 1:10000 dilution.

Lysates/proteins: 25µg per lane.

Blocking buffer: 3% BSA.

Detection: ECL Basic Kit (RM00020).

Exposure time: 5s.