

AP1121

Leader in Biomolecular Solutions for Life Science



# Phospho-EZR-T567/RDX-T564/MSN-T558 Rabbit pAb

Catalog No.: AP1121

## Basic Information

### Observed MW

75-80 kDa

### Calculated MW

23-71 kDa

### Category

Polyclonal Antibody

### Applications

WB, ELISA

### Cross-Reactivity

Human, Rat

## Background

The cytoplasmic peripheral membrane protein encoded by this gene functions as a protein-tyrosine kinase substrate in microvilli. As a member of the ERM protein family, this protein serves as an intermediate between the plasma membrane and the actin cytoskeleton. This protein plays a key role in cell surface structure adhesion, migration and organization, and it has been implicated in various human cancers. A pseudogene located on chromosome 3 has been identified for this gene. Alternatively spliced variants have also been described for this gene.

## Recommended Dilutions

**WB** 1:500 - 1:2000

**ELISA** Recommended starting concentration is 1 µg/mL. Please optimize the concentration based on your specific assay requirements.

## Immunogen Information

### Gene ID

7430/4478/5962

### Swiss Prot

P15311/P35241/P26038

### Immunogen

Synthetic peptide. This information is considered to be commercially sensitive.

### Synonyms

## Contact



[www.abclonal.com](http://www.abclonal.com)

## Product Information

### Source

Rabbit

### Isotype

IgG

### Purification

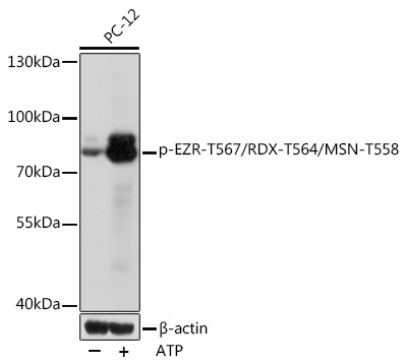
Affinity purification

### Storage

Store at -20°C. Avoid freeze / thaw cycles.

Buffer: PBS with 0.01% thimerosal, 50% glycerol, pH 7.3.

# Validation Data



Western blot analysis of lysates from PC-12 cells, using Phospho-EZR-T567/RDX-T564/MSN-T558 Rabbit pAb (AP1121) at 1:1000 dilution. PC-12 cells were treated with ATP(5 mM) at 30°C for 1 hour.

Secondary antibody: HRP-conjugated Goat anti-Rabbit IgG (H+L) (AS014) at 1:10000 dilution.

Lysates/proteins: 25µg per lane.

Blocking buffer: 3% BSA.

Detection: ECL Basic Kit (RM00020).

Exposure time: 10s.