

AP1011

Leader in Biomolecular Solutions for Life Science



Phospho-Raf1-S621 Rabbit mAb

Catalog No.: AP1011 **Recombinant**

Basic Information

Observed MW

73kDa

Calculated MW

73kDa

Category

SMab Recombinant Monoclonal Antibody

Applications

WB, ELISA

Cross-Reactivity

Human, Rat

CloneNo number

ARC1556

Background

This gene is the cellular homolog of viral raf gene (v-raf). The encoded protein is a MAP kinase kinase kinase (MAP3K), which functions downstream of the Ras family of membrane associated GTPases to which it binds directly. Once activated, the cellular RAF1 protein can phosphorylate to activate the dual specificity protein kinases MEK1 and MEK2, which in turn phosphorylate to activate the serine/threonine specific protein kinases, ERK1 and ERK2. Activated ERKs are pleiotropic effectors of cell physiology and play an important role in the control of gene expression involved in the cell division cycle, apoptosis, cell differentiation and cell migration. Mutations in this gene are associated with Noonan syndrome 5 and LEOPARD syndrome 2.

Recommended Dilutions

WB 1:500 - 1:1000

Immunogen Information

Gene ID

5894

Swiss Prot

P04049

Immunogen

A synthetic phosphorylated peptide around S621 of human Phospho-Raf1-S621 (P04049).

Synonyms

NS5; CRAF; Raf-1; c-Raf; CMD1NN; Phospho-Raf1-S621

Contact



www.abclonal.com

Product Information

Source

Rabbit

Isotype

IgG

Purification

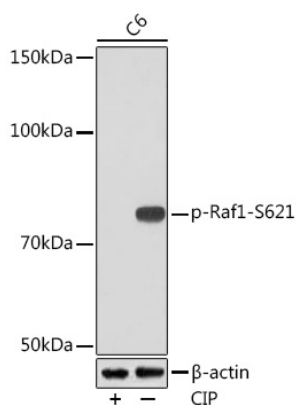
Affinity purification

Storage

Store at -20°C. Avoid freeze / thaw cycles.

Buffer: PBS with 0.02% sodium azide, 0.05% BSA, 50% glycerol, pH 7.3.

Validation Data



Western blot analysis of extracts of C6 cells, using Phospho-Raf1-S621 Rabbit mAb (AP1011) at 1:1000 dilution. C6 cells were treated by CIP (20uL/400ul) at 37°C for 1 hour.
 Secondary antibody: HRP Goat Anti-Rabbit IgG (H+L) (AS014) at 1:10000 dilution.
 Lysates/proteins: 25µg per lane.
 Blocking buffer: 3% BSA.
 Detection: ECL Basic Kit (RM00020).
 Exposure time: 3min.

Western blot analysis of extracts of HeLa cells, using Phospho-Raf1-S621 Rabbit mAb (AP1011) at 1:1000 dilution. HeLa cells were treated by CIP (20uL/400ul) at 37°C for 1 hour.
 Secondary antibody: HRP Goat Anti-Rabbit IgG (H+L) (AS014) at 1:10000 dilution.
 Lysates/proteins: 25µg per lane.
 Blocking buffer: 3% BSA.
 Detection: ECL Enhanced Kit (RM00021).
 Exposure time: 3min.

