

AP0905

Leader in Biomolecular Solutions for Life Science



# Pan Phospho-Tyrosine Rabbit pAb

Catalog No.: AP0905 **6 Publications**

## Basic Information

---

### Observed MW

20-70kDa

### Calculated MW

### Category

Polyclonal Antibody

### Applications

WB,IF/ICC,ELISA

### Cross-Reactivity

Human,Mouse,Rat,Other (Wide Range Predicted)

## Background

---

Tyrosine phosphorylation (pTyr), much of which occurred on localized multiple sites, initiates cellular signaling, governs cellular functions, and its dysregulation is implicated in many diseases, especially cancers. pTyr-specific sensing is of great significance for understanding disease states and developing targeted anticancer drugs.

## Recommended Dilutions

---

**WB** 1:500 - 1:2000

**IF/ICC** 1:50 - 1:200

**ELISA** Recommended starting concentration is 1 µg/mL. Please optimize the concentration based on your specific assay requirements.

## Immunogen Information

---

**Gene ID** **Swiss Prot**

### Immunogen

Synthetic peptide. This information is considered to be commercially sensitive.

### Synonyms

## Contact

---

 [www.abclonal.com](http://www.abclonal.com)

## Product Information

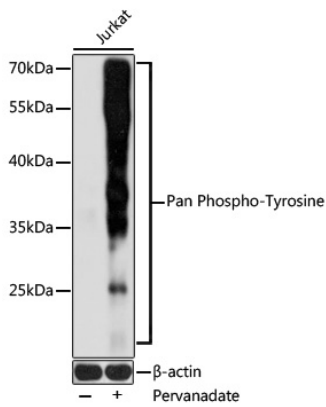
---

<b>Source</b> Rabbit	<b>Isotype</b> IgG	<b>Purification</b> Affinity purification
-------------------------	-----------------------	--

### Storage

Store at -20°C. Avoid freeze / thaw cycles.  
Buffer: PBS with 0.09% Sodium azide, 50% glycerol,pH7.3.

## Validation Data



Western blot analysis of lysates from Jurkat cells, using Pan Phospho-Tyrosine pAb (AP0905) at 1:1000 dilution. Jurkat cells were treated with Pervanadate (1 mM) at 37°C for 30 minutes.

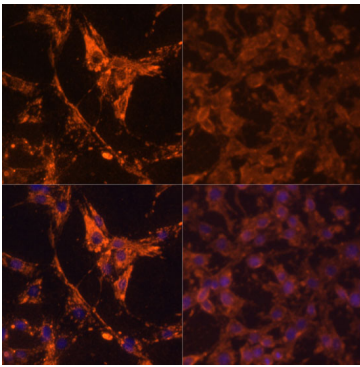
Secondary antibody: HRP-conjugated Goat anti-Rabbit IgG (H+L) (AS014) at 1:10000 dilution.

Lysates/proteins: 25µg per lane.

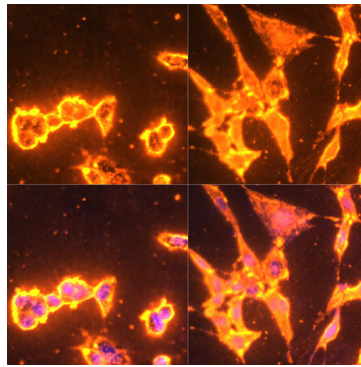
Blocking buffer: 3% BSA.

Detection: ECL Basic Kit (RM00020).

Exposure time: 1s.



Immunofluorescence analysis of C6 cells using Pan Phospho-Tyrosine (AP0905) at dilution of 1:100. Secondary antibody: Cy3-conjugated Goat anti-Rabbit IgG (H+L) (AS007) at 1:500 dilution. Blue: DAPI for nuclear staining. C6 cells were treated with 20% FBS at 37°C for 20 minutes after serum-starvation overnight.



Immunofluorescence analysis of NIH/3T3 cells using Pan Phospho-Tyrosine (AP0905) at dilution of 1:100. Secondary antibody: Cy3-conjugated Goat anti-Rabbit IgG (H+L) (AS007) at 1:500 dilution. Blue: DAPI for nuclear staining. NIH/3T3 cells were treated with 20% FBS at 37°C for 20 minutes after serum-starvation overnight.