

AP0837

Leader in Biomolecular Solutions for Life Science



# Phospho-PLC beta 3 (PLCB3)-S1105 Rabbit pAb

Catalog No.: AP0837

## Basic Information

### Observed MW

150kDa

### Calculated MW

139kDa

### Category

Polyclonal Antibody

### Applications

WB,ELISA

### Cross-Reactivity

Human,Mouse,Rat

## Background

This gene encodes a member of the phosphoinositide phospholipase C beta enzyme family that catalyze the production of the secondary messengers diacylglycerol and inositol 1,4,5-triphosphate from phosphatidylinositol in G-protein-linked receptor-mediated signal transduction. Alternative splicing results in multiple transcript variants.

## Recommended Dilutions

**WB** 1:500 - 1:2000

**ELISA** Recommended starting concentration is 1 µg/mL. Please optimize the concentration based on your specific assay requirements.

## Immunogen Information

### Gene ID

5331

### Swiss Prot

Q01970

### Immunogen

Synthetic peptide. This information is considered to be commercially sensitive.

### Synonyms

SMDCD; Phospho-PLC beta 3 (PLCB3)-S1105

## Contact

 [www.abclonal.com](http://www.abclonal.com)

## Product Information

### Source

Rabbit

### Isotype

IgG

### Purification

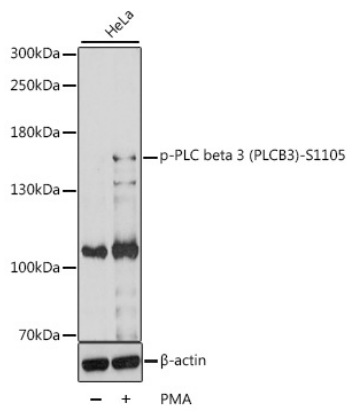
Affinity purification

### Storage

Store at -20°C. Avoid freeze / thaw cycles.

Buffer: PBS with 0.01% thimerosal, 50% glycerol, pH7.3.

## Validation Data



Western blot analysis of lysates from HeLa cells, using Phospho-PLC beta 3 (PLCB3)-S1105 Rabbit pAb (AP0837) at 1:1000 dilution. HeLa cells were treated with PMA/TPA (200nM) for 15 minutes after serum-starvation overnight. Secondary antibody: HRP-conjugated Goat anti-Rabbit IgG (H+L) (AS014) at 1:10000 dilution.

Lysates/proteins: 25µg per lane.

Blocking buffer: 3% BSA.

Detection: ECL Basic Kit (RM00020).

Exposure time: 10s.