

AP0827

Leader in Biomolecular Solutions for Life Science



Phospho-PLC gamma 1 (PLCG1)-S1248 Rabbit pAb

Catalog No.: AP0827

Basic Information

Observed MW

149kDa

Calculated MW

149kDa

Category

Polyclonal Antibody

Applications

WB,IHC-P,ELISA

Cross-Reactivity

Human,Mouse,Rat

Background

The protein encoded by this gene catalyzes the formation of inositol 1,4,5-trisphosphate and diacylglycerol from phosphatidylinositol 4,5-bisphosphate. This reaction uses calcium as a cofactor and plays an important role in the intracellular transduction of receptor-mediated tyrosine kinase activators. For example, when activated by SRC, the encoded protein causes the Ras guanine nucleotide exchange factor RasGRP1 to translocate to the Golgi, where it activates Ras. Also, this protein has been shown to be a major substrate for heparin-binding growth factor 1 (acidic fibroblast growth factor)-activated tyrosine kinase. Two transcript variants encoding different isoforms have been found for this gene.

Recommended Dilutions

WB 1:500 - 1:2000

IHC-P 1:10 - 1:100

ELISA Recommended starting concentration is 1 µg/mL. Please optimize the concentration based on your specific assay requirements.

Immunogen Information

Gene ID

5335

Swiss Prot

P19174

Immunogen

Synthetic peptide. This information is considered to be commercially sensitive.

Synonyms

PLC1; NCKAP3; PLC-II; PLC148; PLCgamma1; Phospho-PLC gamma 1 (PLCG1)-S1248

Contact

 www.abclonal.com

Product Information

Source

Rabbit

Isotype

IgG

Purification

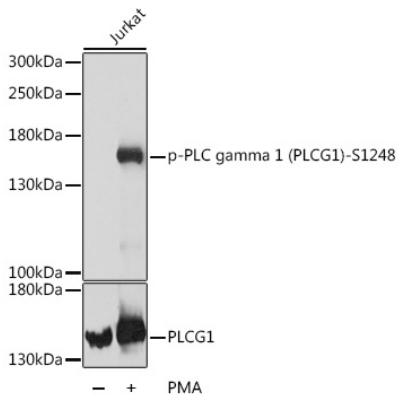
Affinity purification

Storage

Store at -20°C. Avoid freeze / thaw cycles.

Buffer: PBS with 0.09% Sodium azide,50% glycerol,pH7.3.

Validation Data



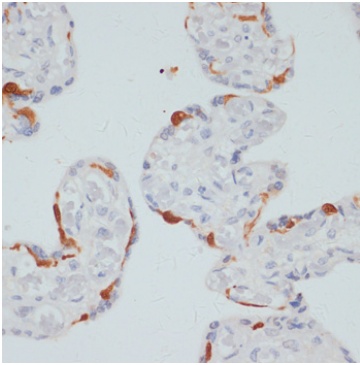
Western blot analysis of lysates from Jurkat cells, using Phospho-PLC gamma 1 (PLCG1)-S1248 Rabbit pAb (AP0827) at dilution or PLC gamma 1 (PLCG1) antibody (A15704). Jurkat cells were treated with PMA/TPA (200 nM) at 37°C for 10 minutes. Secondary antibody: HRP-conjugated Goat anti-Rabbit IgG (H+L) (AS014) at 1:10000 dilution.

Lysates/proteins: 25µg per lane.

Blocking buffer: 3% BSA.

Detection: ECL Basic Kit (RM00020).

Exposure time: 90s.



Immunohistochemistry analysis of paraffin-embedded Human placenta using Phospho-PLC gamma 1 (PLCG1)-S1248 Rabbit pAb (AP0827) at dilution of 1:100 (40x lens). Microwave antigen retrieval performed with 0.01M Tris/EDTA Buffer (pH 9.0) prior to IHC staining.