

AP0804

Leader in Biomolecular Solutions for Life Science



Phospho-Vimentin-S56 Rabbit pAb

Catalog No.: AP0804 **1 Publications**

Basic Information

Observed MW

57kDa

Calculated MW

54kDa

Category

Polyclonal Antibody

Applications

WB,ELISA

Cross-Reactivity

Human,Rat

Background

This gene encodes a type III intermediate filament protein. Intermediate filaments, along with microtubules and actin microfilaments, make up the cytoskeleton. The encoded protein is responsible for maintaining cell shape and integrity of the cytoplasm, and stabilizing cytoskeletal interactions. This protein is involved in neuritogenesis and cholesterol transport and functions as an organizer of a number of other critical proteins involved in cell attachment, migration, and signaling. Bacterial and viral pathogens have been shown to attach to this protein on the host cell surface. Mutations in this gene are associated with congenital cataracts in human patients.

Recommended Dilutions

WB 1:500 - 1:2000

ELISA Recommended starting concentration is 1 µg/mL. Please optimize the concentration based on your specific assay requirements.

Immunogen Information

Gene ID

7431

Swiss Prot

P08670

Immunogen

Synthetic peptide. This information is considered to be commercially sensitive.

Synonyms

CTRCT30; HEL113; Vimentin; VIM; vimentin; Phospho-Vimentin-S56

Contact

 www.abclonal.com

Product Information

Source

Rabbit

Isotype

IgG

Purification

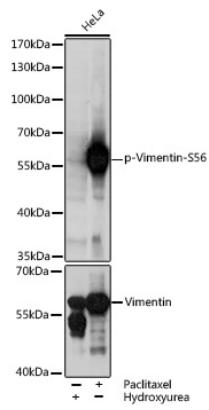
Affinity purification

Storage

Store at -20°C. Avoid freeze / thaw cycles.

Buffer: PBS with 0.01% thimerosal, 50% glycerol, pH7.3.

Validation Data



Western blot analysis of lysates from HeLa cells, using Phospho-Vimentin-S56 pAb (AP0804) at 1:3000 dilution or Vimentin antibody (A11952). HeLa cells were treated with Hydroxyurea (4 mM) at 37°C for 20 hours. HeLa cells were treated with Paclitaxel (100 nM/mL) at 37°C for 20 hours.

Secondary antibody: HRP-conjugated Goat anti-Rabbit IgG (H+L) (AS014) at 1:10000 dilution.

Lysates/proteins: 25µg per lane.

Blocking buffer: 3% BSA.

Detection: ECL Basic Kit (RM00020).

Exposure time: 1s.