

AP0788

Leader in Biomolecular Solutions for Life Science



Phospho-PEA15-S104 Rabbit pAb

Catalog No.: AP0788

Basic Information

Observed MW

13kDa/15kDa

Calculated MW

15kDa

Category

Polyclonal Antibody

Applications

WB,ELISA

Cross-Reactivity

Human,Mouse,Rat

Background

This gene encodes a death effector domain-containing protein that functions as a negative regulator of apoptosis. The encoded protein is an endogenous substrate for protein kinase C. This protein is also overexpressed in type 2 diabetes mellitus, where it may contribute to insulin resistance in glucose uptake. Alternative splicing results in multiple transcript variants.

Recommended Dilutions

WB 1:500 - 1:2000

ELISA Recommended starting concentration is 1 µg/mL. Please optimize the concentration based on your specific assay requirements.

Immunogen Information

Gene ID
8682

Swiss Prot
Q15121

Immunogen

Synthetic peptide. This information is considered to be commercially sensitive.

Synonyms

PED; MAT1; HMAT1; MAT1H; PEA-15; HUMMAT1H; PED-PEA15; PED/PEA15; Phospho-PEA15-S104

Contact

 www.abclonal.com

Product Information

Source
Rabbit

Isotype
IgG

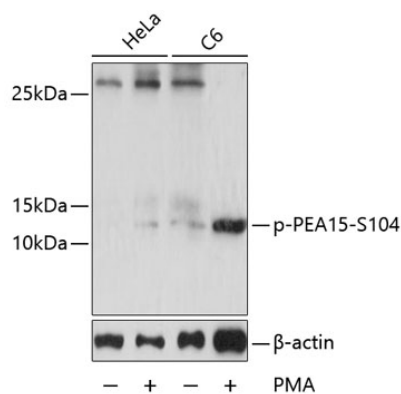
Purification
Affinity purification

Storage

Store at -20°C. Avoid freeze / thaw cycles.

Buffer: PBS with 0.01% thimerosal, 50% glycerol, pH7.3.

Validation Data



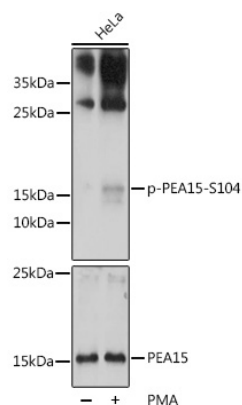
Western blot analysis of lysates from HeLa and C6 cells, using Phospho-PEA15-S104 Rabbit pAb (AP0788) at 1:2000 dilution. HeLa cells were treated with PMA/TPA (200nM) for 15 minutes after serum-starvation overnight. C6 cells were treated with PMA/TPA (200nM) for 30 minutes after serum-starvation overnight. Secondary antibody: HRP-conjugated Goat anti-Rabbit IgG (H+L) (AS014) at 1:10000 dilution.

Lysates/proteins: 25μg per lane.

Blocking buffer: 3% BSA.

Detection: ECL Basic Kit (RM00020).

Exposure time: 10s.



Western blot analysis of lysates from HeLa cells, using Phospho-PEA15-S104 Rabbit pAb (A9956). HeLa cells were treated with PMA/TPA (200nM) for 15 minutes after serum-starvation overnight.

Secondary antibody: HRP-conjugated Goat anti-Rabbit IgG (H+L) (AS014) at 1:10000 dilution.

Lysates/proteins: 25μg per lane.

Blocking buffer: 3% BSA.

Detection: ECL Basic Kit (RM00020).

Exposure time: 90s.