

AP0777

Leader in Biomolecular Solutions for Life Science



Phospho-Lamin A/C-S22 Rabbit pAb

Catalog No.: AP0777

2 Publications

Basic Information

Observed MW

69kDa, 78kDa

Calculated MW

74kDa

Category

Polyclonal Antibody

Applications

WB,IP,ELISA

Cross-Reactivity

Human,Rat

Background

The protein encoded by this gene is part of the nuclear lamina, a two-dimensional matrix of proteins located next to the inner nuclear membrane. The lamin family of proteins make up the matrix and are highly conserved in evolution. During mitosis, the lamina matrix is reversibly disassembled as the lamin proteins are phosphorylated. Lamin proteins are thought to be involved in nuclear stability, chromatin structure and gene expression. Vertebrate lamins consist of two types, A and B. Alternative splicing results in multiple transcript variants. Mutations in this gene lead to several diseases: Emery-Dreifuss muscular dystrophy, familial partial lipodystrophy, limb girdle muscular dystrophy, dilated cardiomyopathy, Charcot-Marie-Tooth disease, and Hutchinson-Gilford progeria syndrome.

Recommended Dilutions

WB 1:500 - 1:2000**IP** 0.5µg-4µg antibody for
200µg-400µg extracts
of whole cells**ELISA** Recommended starting
concentration is 1
µg/mL. Please optimize
the concentration
based on your specific
assay requirements.

Immunogen Information

Gene ID
4000**Swiss Prot**
P02545

Immunogen

Synthetic peptide. This information is considered to be commercially sensitive.

Synonyms

FPL; IDC; LFP; CDDC; EMD2; FPLD; HGPS; LDP1; LMN1; LMNC; MADA; PRO1; CDCD1;
CMD1A; FPLD2; LMNL1; CMT2B1; LGMD1B; Phospho-Lamin A/C-S22

Product Information

Source
Rabbit**Isotype**
IgG**Purification**
Affinity purification

Storage

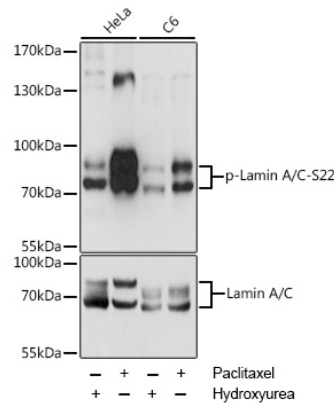
Store at -20°C. Avoid freeze / thaw cycles.

Buffer: PBS with 0.01% thimerosal, 50% glycerol, pH7.3.

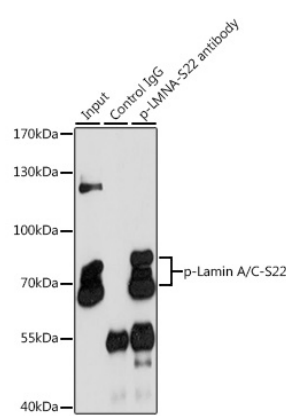
Contact

 www.abclonal.com

Validation Data



Western blot analysis of various lysates using Phospho-Lamin A/C-S22 Rabbit pAb (AP0777) at 1:2000 dilution or Lamin A antibody (A0249). HeLa cells were treated with Hydroxyurea (4 mM) at 37°C for 20 hours or treated with Paclitaxel (100 nM/mL) at 37°C for 20 hours. C6 cells were treated with Hydroxyurea (4 mM) at 37°C for 20 hours or treated with Paclitaxel (100 nM) at 37°C for 20 hours. Secondary antibody: HRP-conjugated Goat anti-Rabbit IgG (H+L) (AS014) at 1:10000 dilution. Lysates/proteins: 25µg per lane. Blocking buffer: 3% BSA. Detection: ECL Enhanced Kit (RM00021). Exposure time: 1s.



Immunoprecipitation analysis of 200 µg extracts of HeLa cells, using 3 µg Phospho-Lamin A/C-S22 pAb (AP0777). Western blot was performed from the immunoprecipitate using Phospho-Lamin A/C-S22 pAb (AP0777) at a dilution of 1:1000. HeLa cells were treated with Paclitaxel (100 nM/mL) at 37°C for 20 hours.