

AP0777

Leader in Biomolecular Solutions for Life Science



# Phospho-Lamin A/C-S22 Rabbit pAb

Catalog No.: AP0777

1 Publications

## Basic Information

### Observed MW

69kDa, 78kDa

### Calculated MW

74kDa

### Category

Polyclonal Antibody

### Applications

WB,IP,ELISA

### Cross-Reactivity

Human,Rat

## Background

The protein encoded by this gene is part of the nuclear lamina, a two-dimensional matrix of proteins located next to the inner nuclear membrane. The lamin family of proteins make up the matrix and are highly conserved in evolution. During mitosis, the lamina matrix is reversibly disassembled as the lamin proteins are phosphorylated. Lamin proteins are thought to be involved in nuclear stability, chromatin structure and gene expression. Vertebrate lamins consist of two types, A and B. Alternative splicing results in multiple transcript variants. Mutations in this gene lead to several diseases: Emery-Dreifuss muscular dystrophy, familial partial lipodystrophy, limb girdle muscular dystrophy, dilated cardiomyopathy, Charcot-Marie-Tooth disease, and Hutchinson-Gilford progeria syndrome.

## Recommended Dilutions

**WB** 1:500 - 1:2000**IP** 0.5µg-4µg antibody for  
200µg-400µg extracts  
of whole cells**ELISA** Recommended starting  
concentration is 1  
µg/mL. Please optimize  
the concentration  
based on your specific  
assay requirements.

## Immunogen Information

### Gene ID

4000

### Swiss Prot

P02545

### Immunogen

A synthetic phosphorylated peptide around S22 of human Lamin A (NP\_005563.1).

### Synonyms

FPL; IDC; LFP; CDDC; EMD2; FPLD; HGPS; LDP1; LMN1; LMNC; MADA; PRO1; CDCD1;  
CMD1A; FPLD2; LMNL1; CMT2B1; LGMD1B; Phospho-Lamin A/C-S22

## Product Information

### Source

Rabbit

### Isotype

IgG

### Purification

Affinity purification

### Storage

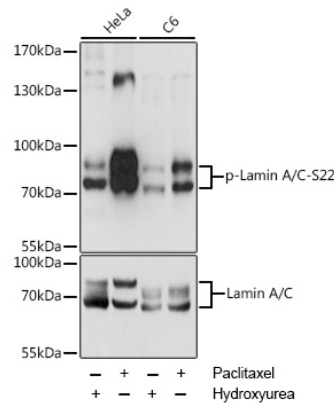
Store at -20°C. Avoid freeze / thaw cycles.

Buffer: PBS with 0.01% thimerosal, 50% glycerol, pH7.3.

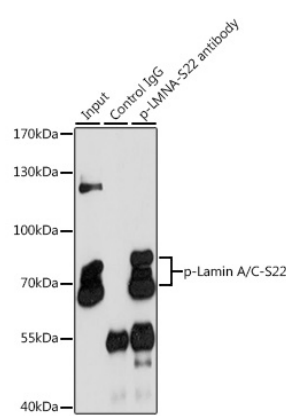
## Contact

[www.abclonal.com](http://www.abclonal.com)

Validation Data



Western blot analysis of various lysates using Phospho-Lamin A/C-S22 Rabbit pAb (AP0777) at 1:2000 dilution or Lamin A antibody (A0249). HeLa cells were treated by Hydroxyurea (4 mM) at 37°C for 20 hours or treated by Paclitaxel (100 nM/mL) at 37°C for 20 hours. C6 cells were treated by Hydroxyurea (4 mM) at 37°C for 20 hours or treated by Paclitaxel (100 nM) at 37°C for 20 hours. Secondary antibody: HRP-conjugated Goat anti-Rabbit IgG (H+L) (AS014) at 1:10000 dilution. Lysates/proteins: 25µg per lane. Blocking buffer: 3% BSA. Detection: ECL Enhanced Kit (RM00021). Exposure time: 1s.



Immunoprecipitation analysis of 200 µg extracts of HeLa cells, using 3 µg Phospho-Lamin A/C-S22 pAb (AP0777). Western blot was performed from the immunoprecipitate using Phospho-Lamin A/C-S22 pAb (AP0777) at a dilution of 1:1000. HeLa cells were treated by Paclitaxel (100 nM/mL) at 37°C for 20 hours.