

AP0768

Leader in Biomolecular Solutions for Life Science



Phospho-EphA3-Y779 Rabbit pAb

Catalog No.: AP0768

Basic Information

Observed MW

110kDa

Calculated MW

110kDa

Category

Polyclonal Antibody

Applications

WB, ELISA

Cross-Reactivity

Human

Background

This gene belongs to the ephrin receptor subfamily of the protein-tyrosine kinase family. EPH and EPH-related receptors have been implicated in mediating developmental events, particularly in the nervous system. Receptors in the EPH subfamily typically have a single kinase domain and an extracellular region containing a Cys-rich domain and 2 fibronectin type III repeats. The ephrin receptors are divided into 2 groups based on the similarity of their extracellular domain sequences and their affinities for binding ephrin-A and ephrin-B ligands. This gene encodes a protein that binds ephrin-A ligands. Two alternatively spliced transcript variants have been described for this gene.

Recommended Dilutions

WB 1:500 - 1:2000

ELISA Recommended starting concentration is 1 µg/mL. Please optimize the concentration based on your specific assay requirements.

Immunogen Information

Gene ID

2042

Swiss Prot

P29320

Immunogen

A synthetic phosphorylated peptide around Y779 of human EphA3 (NP_005224.2).

Synonyms

EK4; ETK; HEK; ETK1; HEK4; TYRO4; Phospho-EphA3-Y779

Contact



www.abclonal.com

Product Information

Source

Rabbit

Isotype

IgG

Purification

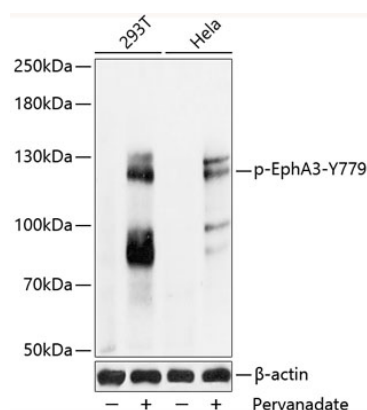
Affinity purification

Storage

Store at -20°C. Avoid freeze / thaw cycles.

Buffer: PBS with 0.01% thimerosal, 50% glycerol, pH7.3.

Validation Data



Western blot analysis of lysates from 293T and HeLa cells, using Phospho-EphA3-Y779 Rabbit pAb (AP0768) at 1:2000 dilution. 293T cells were treated by Pervanadate (1mM) for 30 minutes after serum-starvation overnight. HeLa cells were treated by Pervanadate (1nM) for 30 minutes after serum-starvation overnight.

Secondary antibody: HRP-conjugated Goat anti-Rabbit IgG (H+L) (AS014) at 1:10000 dilution.

Lysates/proteins: 25μg per lane.

Blocking buffer: 3% BSA.

Detection: ECL Basic Kit (RM00020).

Exposure time: 1s.