

AP0648

Leader in Biomolecular Solutions for Life Science



Phospho-Estrogen Receptor beta-S105 Rabbit pAb

Catalog No.: AP0648

Basic Information

Observed MW

59kDa

Calculated MW

59kDa

Category

Polyclonal Antibody

Applications

WB

Cross-Reactivity

Human,Mouse,Rat

Background

This gene encodes a member of the family of estrogen receptors and superfamily of nuclear receptor transcription factors. The gene product contains an N-terminal DNA binding domain and C-terminal ligand binding domain and is localized to the nucleus, cytoplasm, and mitochondria. Upon binding to 17beta-estradiol or related ligands, the encoded protein forms homo- or hetero-dimers that interact with specific DNA sequences to activate transcription. Some isoforms dominantly inhibit the activity of other estrogen receptor family members. Several alternatively spliced transcript variants of this gene have been described, but the full-length nature of some of these variants has not been fully characterized.

Recommended Dilutions

WB 1:500 - 1:1000

Immunogen Information

Gene ID

2100

Swiss Prot

Q92731

Immunogen

Synthetic peptide. This information is considered to be commercially sensitive.

Synonyms

Erb; ESRB; ODG8; ESTRB; NR3A2; ER-BETA; ESR-BETA; Phospho-Estrogen Receptor beta-S105

Contact

 www.abclonal.com

Product Information

Source

Rabbit

Isotype

IgG

Purification

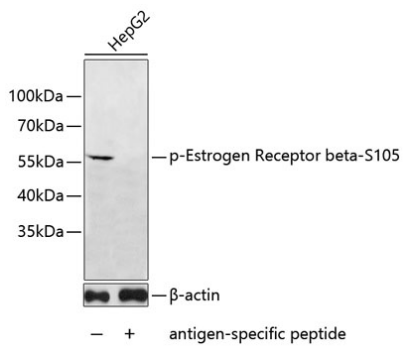
Affinity purification

Storage

Store at -20°C. Avoid freeze / thaw cycles.

Buffer: PBS with 0.02% sodium azide,50% glycerol,pH7.3.

Validation Data



Western blot analysis of lysates from HepG2 cells, using Phospho-Estrogen Receptor beta-S105 Rabbit pAb (AP0648).

Secondary antibody: HRP-conjugated Goat anti-Rabbit IgG (H+L) (AS014) at 1:10000 dilution.

Lysates/proteins: 25µg per lane.

Blocking buffer: 3% BSA.