

AP0631

Leader in Biomolecular Solutions for Life Science



# Phospho-JNK1/2/3-T183/T183/T221 Rabbit mAb

Catalog No.: AP0631

Recombinant

76 Publications

## Basic Information

### Observed MW

46kDa/54kDa

### Calculated MW

35kDa/44kDa/48kDa/27kDa/52kDa

### Category

SMab Recombinant Monoclonal  
Antibody

### Applications

WB,IHC-P,IF/ICC,ELISA

### Cross-Reactivity

Human,Mouse,Rat

### CloneNo number

ARC0193

## Background

The protein encoded by this gene is a member of the MAP kinase family. MAP kinases act as an integration point for multiple biochemical signals, and are involved in a wide variety of cellular processes such as proliferation, differentiation, transcription regulation and development. This kinase is activated by various cell stimuli, and targets specific transcription factors, and thus mediates immediate-early gene expression in response to cell stimuli. The activation of this kinase by tumor-necrosis factor alpha (TNF-alpha) is found to be required for TNF-alpha induced apoptosis. This kinase is also involved in UV radiation induced apoptosis, which is thought to be related to cytochrom c-mediated cell death pathway. Studies of the mouse counterpart of this gene suggested that this kinase play a key role in T cell proliferation, apoptosis and differentiation. Several alternatively spliced transcript variants encoding distinct isoforms have been reported. [provided by RefSeq, Apr 2016]

## Recommended Dilutions

WB 1:1000 - 1:5000

IHC-P 1:50 - 1:200

IF/ICC 1:50 - 1:200

ELISA Recommended starting concentration is 1 µg/mL. Please optimize the concentration based on your specific assay requirements.

## Immunogen Information

### Gene ID

5599/5601/5602

### Swiss Prot

P45983/P45984/P53779

### Immunogen

Synthetic peptide. This information is considered to be commercially sensitive.

### Synonyms

JNK1/JNK2/JNK3; Phospho-JNK1/2/3-T183/T183/T221

## Product Information

### Source

Rabbit

### Isotype

IgG

### Purification

Affinity purification

### Storage

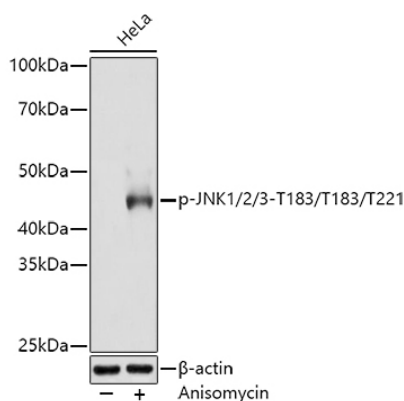
Store at -20°C. Avoid freeze / thaw cycles.

Buffer: PBS containing 50% glycerol and 0.05% BSA, preserved with proclin300 or sodium azide (as specified on the Certificate of Analysis), pH 7.3.

## Contact

[www.abclonal.com](http://www.abclonal.com)

## Validation Data



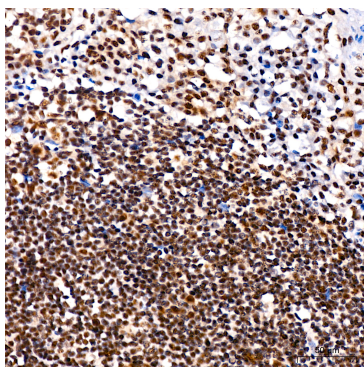
Western blot analysis of lysates from HeLa cells, using Phospho-JNK1/2/3-T183/T183/T221 Rabbit mAb (AP0631) at 1:3000 dilution. HeLa cells were treated with Anisomycin (25 µg/mL) at 37°C for 30 minutes after serum-starvation overnight. Secondary antibody: HRP-conjugated Goat anti-Rabbit IgG (H+L) (AS014) at 1:10000 dilution.

Lysates/proteins: 25µg per lane.

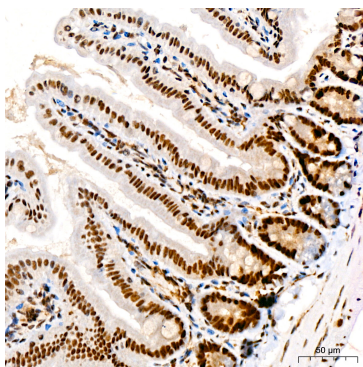
Blocking buffer: 3% nonfat dry milk in TBST.

Detection: ECL Basic Kit (RM00020).

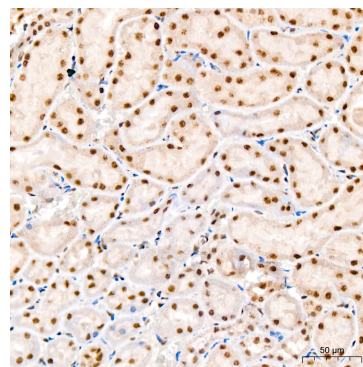
Exposure time: 180s.



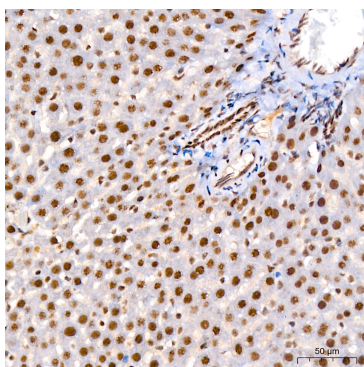
Immunohistochemistry analysis of paraffin-embedded Human tonsil using Phospho-JNK1/2/3-T183/T183/T221 Rabbit mAb (AP0631) at dilution of 1:200 (40x lens). High pressure antigen retrieval performed with 0.01M Citrate buffer (pH 6.0) prior to IHC staining.



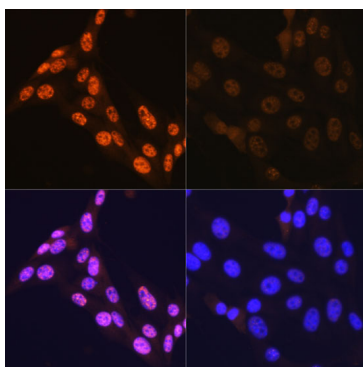
Immunohistochemistry analysis of paraffin-embedded Mouse colon using Phospho-JNK1/2/3-T183/T183/T221 Rabbit mAb (AP0631) at dilution of 1:200 (40x lens). High pressure antigen retrieval performed with 0.01M Citrate buffer (pH 6.0) prior to IHC staining.



Immunohistochemistry analysis of paraffin-embedded Rat kidney using Phospho-JNK1/2/3-T183/T183/T221 Rabbit mAb (AP0631) at dilution of 1:200 (40x lens). High pressure antigen retrieval performed with 0.01M Citrate buffer (pH 6.0) prior to IHC staining.



Immunohistochemistry analysis of paraffin-embedded Rat liver using Phospho-JNK1/2/3-T183/T183/T221 Rabbit mAb (AP0631) at dilution of 1:200 (40x lens). High pressure antigen retrieval performed with 0.01M Citrate buffer (pH 6.0) prior to IHC staining.



Immunofluorescence analysis of NIH-3T3 cells using Phospho-JNK1/2/3-T183/T183/T221 Rabbit mAb (AP0631). NIH-3T3 cells were treated with Anisomycin (25 µg/mL) at 37°C for 30 minutes after serum-starvation overnight. Secondary antibody: Cy3-conjugated Goat anti-Rabbit IgG (H+L) (AS007) at 1:500 dilution. Blue: DAPI for nuclear staining.