

AP0575

Leader in Biomolecular Solutions for Life Science



Phospho-Bcl-2-S70 Rabbit pAb

Catalog No.: AP0575

Basic Information

Observed MW

28kDa

Calculated MW

26kDa

Category

Polyclonal Antibody

Applications

WB,IF/ICC,ELISA

Cross-Reactivity

Human,Rat

Background

This gene encodes an integral outer mitochondrial membrane protein that blocks the apoptotic death of some cells such as lymphocytes. Constitutive expression of BCL2, such as in the case of translocation of BCL2 to Ig heavy chain locus, is thought to be the cause of follicular lymphoma. Alternative splicing results in multiple transcript variants.

Recommended Dilutions

WB 1:500 - 1:2000

IF/ICC 1:50 - 1:200

ELISA Recommended starting concentration is 1 µg/mL. Please optimize the concentration based on your specific assay requirements.

Immunogen Information

Gene ID

596

Swiss Prot

P10415

Immunogen

Synthetic peptide. This information is considered to be commercially sensitive.

Synonyms

Bcl-2; PPP1R50; Phospho-Bcl-2-S70

Contact

 www.abclonal.com

Product Information

Source

Rabbit

Isotype

IgG

Purification

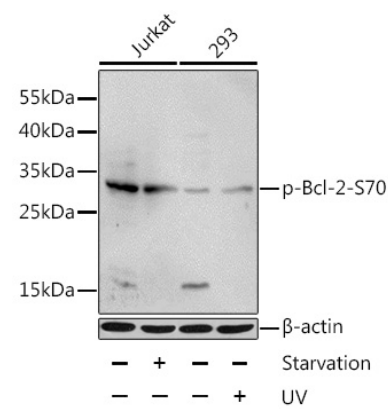
Affinity purification

Storage

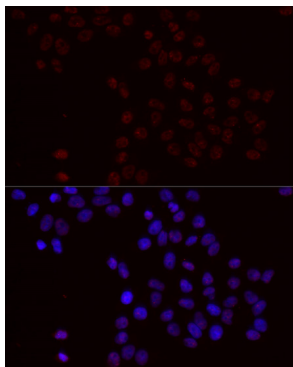
Store at -20°C. Avoid freeze / thaw cycles.

Buffer: PBS containing 50% glycerol, preserved with proclin300 or sodium azide (as specified on the Certificate of Analysis), pH 7.3.

Validation Data



Western blot analysis of lysates from Jurkat and 293 cells, using Phospho-Bcl-2-S70 Rabbit pAb (AP0575) at 1:1000 dilution. Jurkat cells were treated by serum-starvation overnight. 293 cells were treated by UV for 15-30 minutes. Secondary antibody: HRP-conjugated Goat anti-Rabbit IgG (H+L) (AS014) at 1:10000 dilution. Lysates/proteins: 25µg per lane. Blocking buffer: 3% BSA.



Immunofluorescence analysis of HeLa cells using Phospho-Bcl-2-S70 Rabbit pAb (AP0575) at dilution of 1:100 (40x lens). Secondary antibody: Cy3-conjugated Goat anti-Rabbit IgG (H+L) (AS007) at 1:500 dilution. Blue: DAPI for nuclear staining.