

AP0523

Leader in Biomolecular Solutions for Life Science



Phospho-AURKA-T288 Rabbit pAb

Catalog No.: AP0523 **2 Publications**

Basic Information

Observed MW

48kDa

Calculated MW

46kDa

Category

Polyclonal Antibody

Applications

WB,ELISA

Cross-Reactivity

Human

Background

The protein encoded by this gene is a cell cycle-regulated kinase that appears to be involved in microtubule formation and/or stabilization at the spindle pole during chromosome segregation. The encoded protein is found at the centrosome in interphase cells and at the spindle poles in mitosis. This gene may play a role in tumor development and progression. A processed pseudogene of this gene has been found on chromosome 1, and an unprocessed pseudogene has been found on chromosome 10. Multiple transcript variants encoding the same protein have been found for this gene.

Recommended Dilutions

WB 1:500 - 1:2000

ELISA Recommended starting concentration is 1 µg/mL. Please optimize the concentration based on your specific assay requirements.

Immunogen Information

Gene ID

6790

Swiss Prot

O14965

Immunogen

Synthetic peptide. This information is considered to be commercially sensitive.

Synonyms

AIK; ARK1; AURA; BTAK; STK6; STK7; STK15; PPP1R47; Phospho-AURKA-T288

Contact

 www.abclonal.com

Product Information

Source

Rabbit

Isotype

IgG

Purification

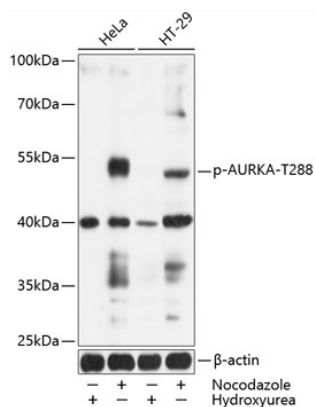
Affinity purification

Storage

Store at -20°C. Avoid freeze / thaw cycles.

Buffer: PBS containing 50% glycerol, preserved with proclin300 or sodium azide (as specified on the Certificate of Analysis), pH 7.3.

Validation Data



Western blot analysis of various lysates, using Phospho-AURKA-T288 Rabbit pAb (AP0523) at 1:1000 dilution. HeLa were treated with Hydroxyurea (4mM) or treated with Nocodazole (50ng/mL) for 20 hours. HT-29 cells were treated with Hydroxyurea (4 mM) for 20 hours or treated with Nocodazole (100ng/mL) for 16 hours.

Secondary antibody: HRP-conjugated Goat anti-Rabbit IgG (H+L) (AS014) at 1:10000 dilution.

Lysates/proteins: 25µg per lane.

Blocking buffer: 3% BSA.

Detection: ECL Basic Kit (RM00020).

Exposure time: 90s.