

AP0520

Leader in Biomolecular Solutions for Life Science



# Phospho-PKC (pan) (zeta)-T410 Rabbit pAb

Catalog No.: AP0520

1 Publications

## Basic Information

### Observed MW

85kDa

### Calculated MW

46kDa/56-68kDa/74-83kDa

### Category

Polyclonal Antibody

### Applications

WB, ELISA

### Cross-Reactivity

Human, Mouse, Rat

## Background

Protein kinase C (PKC) is a family of serine- and threonine-specific protein kinases that can be activated by calcium and the second messenger diacylglycerol. PKC family members phosphorylate a wide variety of protein targets and are known to be involved in diverse cellular signaling pathways. PKC family members also serve as major receptors for phorbol esters, a class of tumor promoters. Each member of the PKC family has a specific expression profile and is believed to play a distinct role in cells. The protein encoded by this gene is one of the PKC family members. This kinase has been reported to play roles in many different cellular processes, such as cell adhesion, cell transformation, cell cycle checkpoint, and cell volume control. Knockout studies in mice suggest that this kinase may be a fundamental regulator of cardiac contractility and Ca(2+) handling in myocytes. [provided by RefSeq, Jul 2008]

## Recommended Dilutions

**WB** 1:500 - 1:2000

**ELISA** Recommended starting concentration is 1 µg/mL. Please optimize the concentration based on your specific assay requirements.

## Immunogen Information

### Gene ID

5578/5579/5580/5581  
/5582/5583/5584/5588/5590

### Swiss Prot

P17252/P05771/Q05655/Q02156/P05129  
/P24723/P41743/Q04759/Q05513

### Immunogen

A synthetic phosphorylated peptide around T410 of human PRKCZ (NP\_002735.3).

### Synonyms

PRKCA/PRKCB/PRKCD/PRKCE/PRKCG/PRKCH/PRKCI/PRKCQ/PRKCZ; Phospho-PKC (pan) (zeta)-T410

## Contact

 [www.abclonal.com](http://www.abclonal.com)

## Product Information

### Source

Rabbit

### Isotype

IgG

### Purification

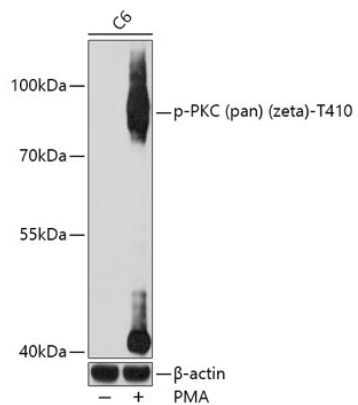
Affinity purification

### Storage

Store at -20°C. Avoid freeze / thaw cycles.

Buffer: PBS with 0.09% Sodium azide, 50% glycerol, pH7.3.

## Validation Data



Western blot analysis of lysates from C6 cells, using Phospho-PKC (pan) (zeta)-T410 Rabbit pAb (AP0520) at 1:1000 dilution. C6 cells were treated by PMA/TPA (200 nM) at 37°C for 30 minutes after serum-starvation overnight.

Secondary antibody: HRP-conjugated Goat anti-Rabbit IgG (H+L) (AS014) at 1:10000 dilution.

Lysates/proteins: 25µg per lane.

Blocking buffer: 3% BSA.

Detection: ECL Basic Kit (RM00020).

Exposure time: 90s.