

AP0506

Leader in Biomolecular Solutions for Life Science



# Phospho-IKK $\alpha$ -S180 Rabbit pAb

Catalog No.: AP0506 **2 Publications**

## Basic Information

### Observed MW

100kDa

### Calculated MW

85kDa

### Category

Polyclonal Antibody

### Applications

WB,ELISA

### Cross-Reactivity

Human,Mouse

## Background

This gene encodes a member of the serine/threonine protein kinase family. The encoded protein, a component of a cytokine-activated protein complex that is an inhibitor of the essential transcription factor NF-kappa-B complex, phosphorylates sites that trigger the degradation of the inhibitor via the ubiquitination pathway, thereby activating the transcription factor.

## Recommended Dilutions

**WB** 1:500 - 1:2000

**ELISA** Recommended starting concentration is 1  $\mu$ g/mL. Please optimize the concentration based on your specific assay requirements.

## Immunogen Information

### Gene ID

1147

### Swiss Prot

O15111

### Immunogen

Synthetic peptide. This information is considered to be commercially sensitive.

### Synonyms

BPS2; IKK1; IKKA; IKBKA; TCF16; NFKBIKA; IKK-alpha; Phospho-IKK $\alpha$ -S180

## Contact

 [www.abclonal.com](http://www.abclonal.com)

## Product Information

### Source

Rabbit

### Isotype

IgG

### Purification

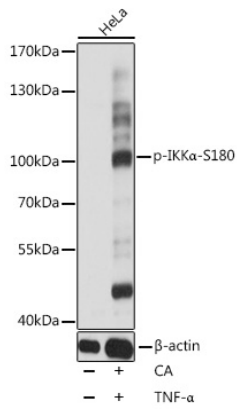
Affinity purification

### Storage

Store at -20°C. Avoid freeze / thaw cycles.

Buffer: PBS containing 50% glycerol, preserved with proclin300 or sodium azide (as specified on the Certificate of Analysis), pH 7.3.

## Validation Data



Western blot analysis of lysates from HeLa cells, using Phospho-IKKα-S180 Rabbit pAb (AP0506) at 1:1000 dilution. HeLa cells were treated with both TNF-α(20ng/mL) and Calyculin A (100nM) for 10 minutes.

Secondary antibody: HRP-conjugated Goat anti-Rabbit IgG (H+L) (AS014) at 1:10000 dilution.

Lysates/proteins: 25µg per lane.

Blocking buffer: 3% BSA.

Detection: ECL Basic Kit (RM00020).

Exposure time: 5s.