

AP0484

Leader in Biomolecular Solutions for Life Science



Phospho-RB-S807/811 Rabbit pAb

Catalog No.: AP0484

4 Publications

Basic Information

Observed MW

120kDa

Calculated MW

106kDa

Category

Polyclonal Antibody

Applications

WB, ELISA

Cross-Reactivity

Human, Mouse, Rat

Background

The protein encoded by this gene is a negative regulator of the cell cycle and was the first tumor suppressor gene found. The encoded protein also stabilizes constitutive heterochromatin to maintain the overall chromatin structure. The active, hypophosphorylated form of the protein binds transcription factor E2F1. Defects in this gene are a cause of childhood cancer retinoblastoma (RB), bladder cancer, and osteogenic sarcoma.

Recommended Dilutions

WB 1:500 - 1:2000

ELISA Recommended starting concentration is 1 µg/mL. Please optimize the concentration based on your specific assay requirements.

Immunogen Information

Gene ID

5925

Swiss Prot

P06400

Immunogen

A synthetic phosphorylated peptide around S807 & S811 of human RB (NP_000312.2).

Synonyms

RB; pRb; OSRC; pp110; p105-Rb; PPP1R130; p110-RB1; Phospho-RB-S807/811

Contact



www.abclonal.com

Product Information

Source

Rabbit

Isotype

IgG

Purification

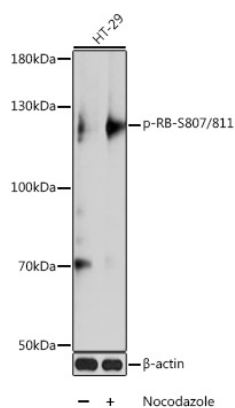
Affinity purification

Storage

Store at -20°C. Avoid freeze / thaw cycles.

Buffer: PBS with 0.09% Sodium azide, 50% glycerol, pH7.3.

Validation Data



Western blot analysis of lysates from HT-29 cells, using Phospho-RB-S807/811 Rabbit pAb (AP0484) at 1:1000 dilution. HT-29 cells were treated by Nocodazole (100ng/mL) for 16 hours.

Secondary antibody: HRP-conjugated Goat anti-Rabbit IgG (H+L) (AS014) at 1:10000 dilution.

Lysates/proteins: 25 μ g per lane.

Blocking buffer: 3% BSA.

Detection: ECL Basic Kit (RM00020).

Exposure time: 5s.