

AP0475

Leader in Biomolecular Solutions for Life Science



Phospho-NF-kB p65/RelA-S536 Rabbit pAb

Catalog No.: AP0475

70 Publications

Basic Information

Observed MW

65kDa

Calculated MW

60kDa

Category

Polyclonal Antibody

Applications

WB,IHC-P,ELISA

Cross-Reactivity

Human,Mouse,Rat

Background

NF-kappa-B is a ubiquitous transcription factor involved in several biological processes. It is held in the cytoplasm in an inactive state by specific inhibitors. Upon degradation of the inhibitor, NF-kappa-B moves to the nucleus and activates transcription of specific genes. NF-kappa-B is composed of NFKB1 or NFKB2 bound to either REL, RELA, or RELB. The most abundant form of NF-kappa-B is NFKB1 complexed with the product of this gene, RELA. Four transcript variants encoding different isoforms have been found for this gene.

Recommended Dilutions

WB 1:500 - 1:1000

IHC-P 1:50 - 1:200

ELISA Recommended starting concentration is 1 µg/mL. Please optimize the concentration based on your specific assay requirements.

Immunogen Information

Gene ID

5970

Swiss Prot

Q04206

Immunogen

A synthetic phosphorylated peptide around S536 of human NF-kB p65/RelA (NP_068810.3).

Synonyms

p65; CMCU; NFKB3; AIF3BL3; Phospho-NF-kB p65/RelA-S536

Contact



www.abclonal.com

Product Information

Source

Rabbit

Isotype

IgG

Purification

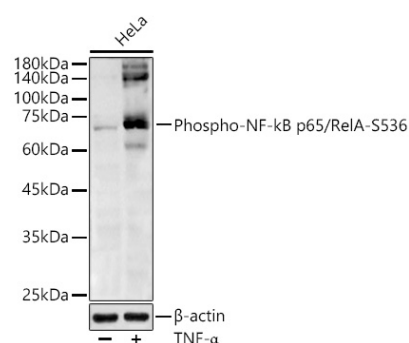
Affinity purification

Storage

Store at -20°C. Avoid freeze / thaw cycles.

Buffer: PBS with 0.05% proclin300,50% glycerol,pH7.3.

Validation Data



Western blot analysis of lysates from HeLa cells using Phospho-NF-κB p65/RelA-S536 Rabbit pAb (AP0475) at 1:1000 dilution. HeLa cells were treated by TNF-α (20 ng/mL) at 37°C for 30 minutes.

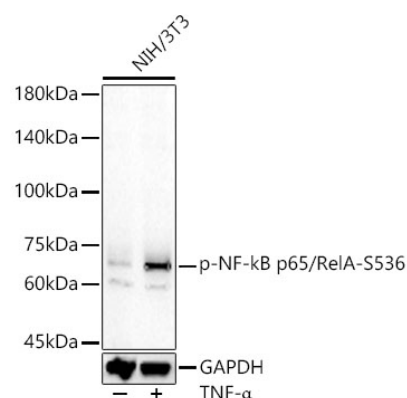
Secondary antibody: HRP-conjugated Goat anti-Rabbit IgG (H+L) (AS014) at 1:10000 dilution.

Lysates/proteins: 25 μg per lane.

Blocking buffer: 3% nonfat dry milk in TBST.

Detection: ECL Basic Kit (RM00020).

Exposure time: 60s.



Western blot analysis of lysates from NIH/3T3 cells using Phospho-NF-κB p65/RelA-S536 Rabbit pAb (AP0475) at 1:600 dilution. NIH/3T3 cells were treated by TNF-α (20 ng/mL) at 37°C for 30 minutes.

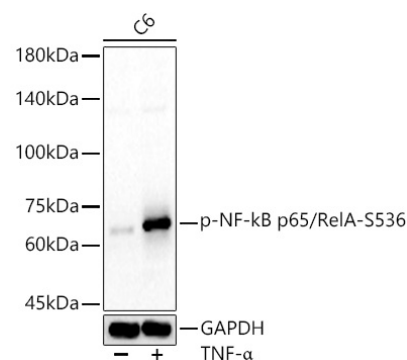
Secondary antibody: HRP-conjugated Goat anti-Rabbit IgG (H+L) (AS014) at 1:10000 dilution.

Lysates/proteins: 25 μg per lane.

Blocking buffer: 3% nonfat dry milk in TBST.

Detection: ECL Basic Kit (RM00020).

Exposure time: 60s.



Western blot analysis of lysates from C6 cells using Phospho-NF-κB p65/RelA-S536 Rabbit pAb (AP0475) at 1:600 dilution. C6 cells were treated by TNF-α (20 ng/mL) at 37°C for 30 minutes.

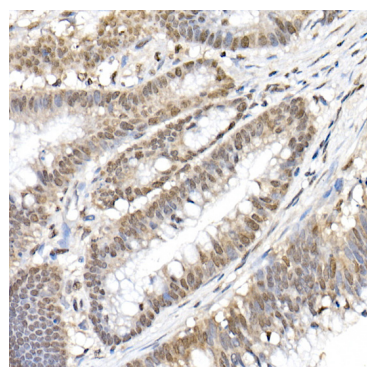
Secondary antibody: HRP-conjugated Goat anti-Rabbit IgG (H+L) (AS014) at 1:10000 dilution.

Lysates/proteins: 25 μg per lane.

Blocking buffer: 3% nonfat dry milk in TBST.

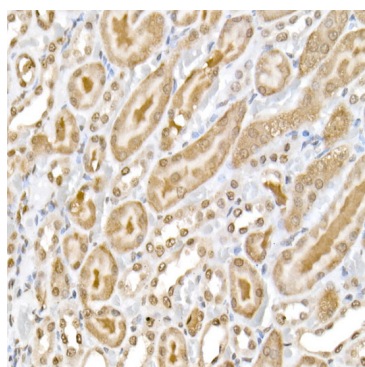
Detection: ECL Basic Kit (RM00020).

Exposure time: 60s.



Immunohistochemistry analysis of paraffin-embedded Human colon

Antibody | Protein | ELISA Kits | Enzyme | NGS | Service



Immunohistochemistry analysis of paraffin-embedded Rat kidney using

For research use only. Not for therapeutic or diagnostic purposes.
Please visit <http://abclonal.com> for a complete listing of recommended products.

Validation Data

carcinoma using Phospho-NF-kB p65/RelA-S536 Rabbit pAb (AP0475) at dilution of 1:50 (40x lens). High pressure antigen retrieval performed with 0.01M Citrate Bufferr (pH 6.0) prior to IHC staining.

Phospho-NF-kB p65/RelA-S536 Rabbit pAb (AP0475) at dilution of 1:50 (40x lens). High pressure antigen retrieval performed with 0.01M Citrate Bufferr (pH 6.0) prior to IHC staining.