

AP0443

Leader in Biomolecular Solutions for Life Science



# Phospho-Raf1-S259 Rabbit pAb

Catalog No.: AP0443

## Basic Information

### Observed MW

73kDa

### Calculated MW

73kDa

### Category

Polyclonal Antibody

### Applications

WB

### Cross-Reactivity

Human

## Background

This gene is the cellular homolog of viral raf gene (v-raf). The encoded protein is a MAP kinase kinase kinase (MAP3K), which functions downstream of the Ras family of membrane associated GTPases to which it binds directly. Once activated, the cellular RAF1 protein can phosphorylate to activate the dual specificity protein kinases MEK1 and MEK2, which in turn phosphorylate to activate the serine/threonine specific protein kinases, ERK1 and ERK2. Activated ERKs are pleiotropic effectors of cell physiology and play an important role in the control of gene expression involved in the cell division cycle, apoptosis, cell differentiation and cell migration. Mutations in this gene are associated with Noonan syndrome 5 and LEOPARD syndrome 2.

## Recommended Dilutions

WB 1:500 - 1:2000

## Immunogen Information

### Gene ID

5894

### Swiss Prot

P04049

### Immunogen

Synthetic peptide. This information is considered to be commercially sensitive.

### Synonyms

NS5; CRAF; Raf-1; c-Raf; CMD1NN; Phospho-Raf1-S259

## Contact



[www.abclonal.com](http://www.abclonal.com)

## Product Information

### Source

Rabbit

### Isotype

IgG

### Purification

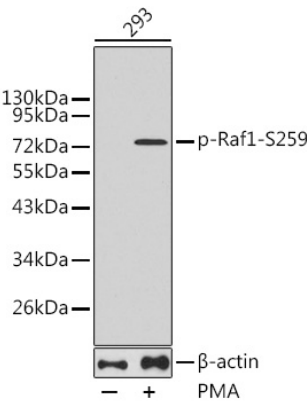
Affinity purification

### Storage

Store at -20°C. Avoid freeze / thaw cycles.

Buffer: PBS with 0.02% sodium azide, 50% glycerol, pH 7.3.

Validation Data



Western blot analysis of lysates from 293 cells, using Phospho-Raf1-S259 Rabbit pAb (AP0443).  
Secondary antibody: HRP-conjugated Goat anti-Rabbit IgG (H+L) (AS014) at 1:10000 dilution.  
Lysates/proteins: 25µg per lane.  
Blocking buffer: 3% BSA.