

AP0441

Leader in Biomolecular Solutions for Life Science



Phospho-Paxillin-Y88 Rabbit pAb

Catalog No.: AP0441

Basic Information

Observed MW

65kDa

Calculated MW

65kDa

Category

Polyclonal Antibody

Applications

WB

Cross-Reactivity

Human

Background

This gene encodes a cytoskeletal protein involved in actin-membrane attachment at sites of cell adhesion to the extracellular matrix (focal adhesion). Alternatively spliced transcript variants encoding different isoforms have been described for this gene. These isoforms exhibit different expression pattern, and have different biochemical, as well as physiological properties (PMID:9054445).

Recommended Dilutions

WB 1:500 - 1:2000

Immunogen Information

Gene ID

5829

Swiss Prot

P49023

Immunogen

A phospho specific peptide corresponding to residues surrounding Y88 of human Paxillin

Synonyms

Paxillin; PXN; paxillin; Phospho-Paxillin-Y88

Contact



www.abclonal.com

Product Information

Source

Rabbit

Isotype

IgG

Purification

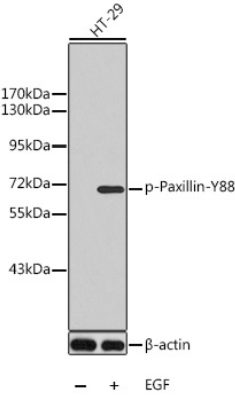
Affinity purification

Storage

Store at -20°C. Avoid freeze / thaw cycles.

Buffer: PBS with 0.02% sodium azide, 50% glycerol, pH7.3.

Validation Data



Western blot analysis of extracts from HT29 cells, using Phospho-Paxillin-Y88 antibody (AP0441).
Secondary antibody: HRP Goat Anti-Rabbit IgG (H+L) (AS014) at 1:10000 dilution.
Lysates/proteins: 25µg per lane.
Blocking buffer: 3% BSA.