

AP0413

Leader in Biomolecular Solutions for Life Science



Phospho-NBS1/NBN-S343 Rabbit pAb

Catalog No.: AP0413

1 Publications

Basic Information

Observed MW

85kDa

Calculated MW

85kDa

Category

Polyclonal Antibody

Applications

WB

Cross-Reactivity

Human

Background

Mutations in this gene are associated with Nijmegen breakage syndrome, an autosomal recessive chromosomal instability syndrome characterized by microcephaly, growth retardation, immunodeficiency, and cancer predisposition. The encoded protein is a member of the MRE11/RAD50 double-strand break repair complex which consists of 5 proteins. This gene product is thought to be involved in DNA double-strand break repair and DNA damage-induced checkpoint activation.

Recommended Dilutions

WB 1:500 - 1:2000

Immunogen Information

Gene ID

4683

Swiss Prot

O60934

Immunogen

A phospho specific peptide corresponding to residues surrounding S343 of human NBS1/NBN

Synonyms

ATV; NBS; P95; NBS1; AT-V1; AT-V2; Phospho-NBS1/NBN-S343

Contact



www.abclonal.com

Product Information

Source

Rabbit

Isotype

IgG

Purification

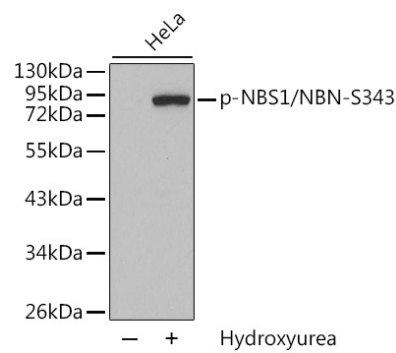
Affinity purification

Storage

Store at -20°C. Avoid freeze / thaw cycles.

Buffer: PBS with 0.02% sodium azide, 50% glycerol, pH7.3.

Validation Data



Western blot analysis of extracts from HeLa cells, using Phospho-NBS1/NBN-S343 antibody (AP0413).
Secondary antibody: HRP Goat Anti-Rabbit IgG (H+L) (AS014) at 1:10000 dilution.
Lysates/proteins: 25µg per lane.
Blocking buffer: 3% BSA.