

AP0372

Leader in Biomolecular Solutions for Life Science



# Phospho-Integrin beta 3 (ITGB3/CD61)-Y773 Rabbit pAb

Catalog No.: AP0372

## Basic Information

### Observed MW

110kDa

### Calculated MW

87kDa

### Category

Polyclonal Antibody

### Applications

WB

### Cross-Reactivity

Human,Mouse

## Background

The ITGB3 protein product is the integrin beta chain beta 3. Integrins are integral cell-surface proteins composed of an alpha chain and a beta chain. A given chain may combine with multiple partners resulting in different integrins. Integrin beta 3 is found along with the alpha IIb chain in platelets. Integrins are known to participate in cell adhesion as well as cell-surface mediated signalling.

## Recommended Dilutions

WB 1:500 - 1:1000

## Immunogen Information

### Gene ID

3690

### Swiss Prot

P05106

### Immunogen

Synthetic peptide. This information is considered to be commercially sensitive.

### Synonyms

GT; GT2; CD61; GP3A; BDPLT2; GPIIIa; BDPLT16; BDPLT24; Phospho-Integrin beta 3 (ITGB3/CD61)-Y773

## Contact



[www.abclonal.com](http://www.abclonal.com)

## Product Information

### Source

Rabbit

### Isotype

IgG

### Purification

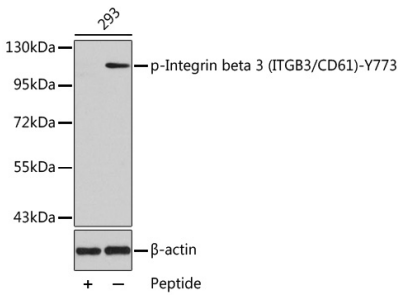
Affinity purification

### Storage

Store at -20°C. Avoid freeze / thaw cycles.

Buffer: PBS with 0.02% sodium azide, 50% glycerol, pH7.3.

# Validation Data



Western blot analysis of lysates from 293 cells using Phospho-Integrin beta 3 (ITGB3/CD61)-Y773 Rabbit pAb (AP0372) and the same antibody preincubated with blocking peptide.  
Secondary antibody: HRP-conjugated Goat anti-Rabbit IgG (H+L) (AS014) at 1:10000 dilution.  
Lysates/proteins: 25µg per lane.  
Blocking buffer: 3% BSA.