

AP0329

Leader in Biomolecular Solutions for Life Science



Phospho-CFL1-Y88/CFL2-Y88 Rabbit pAb

Catalog No.: AP0329

Basic Information

Observed MW

19kDa

Calculated MW

18kDa/16kDa

Category

Polyclonal Antibody

Applications

WB

Cross-Reactivity

Human, Mouse

Background

The protein encoded by this gene can polymerize and depolymerize F-actin and G-actin in a pH-dependent manner. Increased phosphorylation of this protein by LIM kinase aids in Rho-induced reorganization of the actin cytoskeleton. Cofilin is a widely distributed intracellular actin-modulating protein that binds and depolymerizes filamentous F-actin and inhibits the polymerization of monomeric G-actin in a pH-dependent manner. It is involved in the translocation of actin-cofilin complex from cytoplasm to nucleus.[supplied by OMIM, Apr 2004]

Recommended Dilutions

WB 1:500 - 1:1000

Immunogen Information

Gene ID

1072/1073

Swiss Prot

P23528/Q9Y281

Immunogen

Synthetic peptide. This information is considered to be commercially sensitive.

Synonyms

CFL1/CFL2; Phospho-CFL1-Y88/CFL2-Y88

Contact



www.abclonal.com

Product Information

Source

Rabbit

Isotype

IgG

Purification

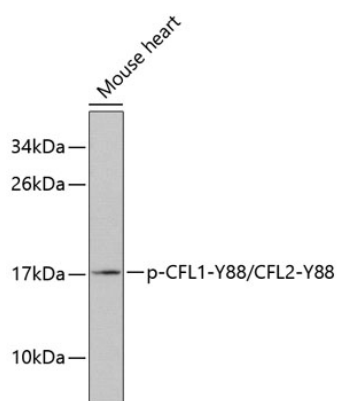
Affinity purification

Storage

Store at -20°C. Avoid freeze / thaw cycles.

Buffer: PBS with 0.02% sodium azide, 50% glycerol, pH7.3.

Validation Data



Western blot analysis of lysates from mouse heart tissue, using Phospho-CFL1-Y88/CFL2-Y88 Rabbit pAb (AP0329).
Secondary antibody: HRP-conjugated Goat anti-Rabbit IgG (H+L) (AS014) at 1:10000 dilution.
Lysates/proteins: 25µg per lane.
Blocking buffer: 3% BSA.