

AP0326

Leader in Biomolecular Solutions for Life Science



Phospho-CDK6-Y13 Rabbit pAb

Catalog No.: AP0326 **4 Publications**

Basic Information

Observed MW

37kDa

Calculated MW

37kDa

Category

Polyclonal Antibody

Applications

WB,IF/ICC,ELISA

Cross-Reactivity

Human,Mouse

Background

The protein encoded by this gene is a member of the CMGC family of serine/threonine protein kinases. This kinase is a catalytic subunit of the protein kinase complex that is important for cell cycle G1 phase progression and G1/S transition. The activity of this kinase first appears in mid-G1 phase, which is controlled by the regulatory subunits including D-type cyclins and members of INK4 family of CDK inhibitors. This kinase, as well as CDK4, has been shown to phosphorylate, and thus regulate the activity of, tumor suppressor protein Rb. Altered expression of this gene has been observed in multiple human cancers. A mutation in this gene resulting in reduced cell proliferation, and impaired cell motility and polarity, and has been identified in patients with primary microcephaly.

Recommended Dilutions

WB 1:500 - 1:2000

IF/ICC 1:100 - 1:200

ELISA Recommended starting concentration is 1 µg/mL. Please optimize the concentration based on your specific assay requirements.

Immunogen Information

Gene ID

1021

Swiss Prot

Q00534

Immunogen

Synthetic peptide. This information is considered to be commercially sensitive.

Synonyms

MCPH12; PLSTIRE; Phospho-CDK6-Y13

Contact

 www.abclonal.com

Product Information

Source

Rabbit

Isotype

IgG

Purification

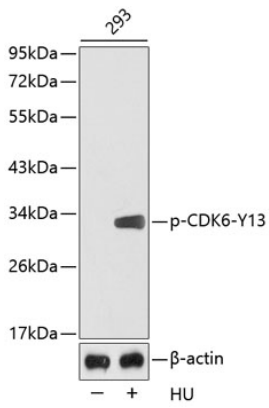
Affinity purification

Storage

Store at -20°C. Avoid freeze / thaw cycles.

Buffer: PBS with 0.01% thimerosal, 50% glycerol, pH7.3.

Validation Data



Western blot analysis of lysates from 293 cells using Phospho-CDK6-Y13 Rabbit pAb (AP0326).

Secondary antibody: HRP-conjugated Goat anti-Rabbit IgG (H+L) (AS014) at 1:10000 dilution.

Lysates/proteins: 25 μ g per lane.

Blocking buffer: 3% BSA.