

AP0321

Leader in Biomolecular Solutions for Life Science



# Phospho-CDC25A-S76 Rabbit pAb

Catalog No.: AP0321

## Basic Information

### Observed MW

70kDa

### Calculated MW

59kDa

### Category

Polyclonal Antibody

### Applications

WB

### Cross-Reactivity

Human,Mouse,Rat

## Background

CDC25A is a member of the CDC25 family of phosphatases. CDC25A is required for progression from G1 to the S phase of the cell cycle. It activates the cyclin-dependent kinase CDC2 by removing two phosphate groups. CDC25A is specifically degraded in response to DNA damage, which prevents cells with chromosomal abnormalities from progressing through cell division. CDC25A is an oncogene, although its exact role in oncogenesis has not been demonstrated. Two transcript variants encoding different isoforms have been found for this gene.

## Recommended Dilutions

WB 1:500 - 1:2000

## Immunogen Information

### Gene ID

993

### Swiss Prot

P30304

### Immunogen

A phospho specific peptide corresponding to residues surrounding S76 of human CDC25A

### Synonyms

CDC25A2; Phospho-CDC25A-S76

## Contact



[www.abclonal.com](http://www.abclonal.com)

## Product Information

### Source

Rabbit

### Isotype

IgG

### Purification

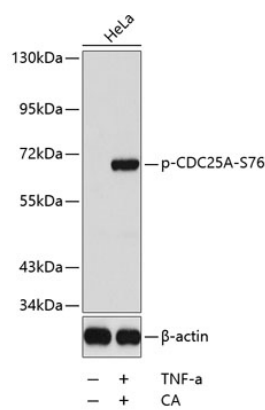
Affinity purification

### Storage

Store at -20°C. Avoid freeze / thaw cycles.

Buffer: PBS with 0.02% sodium azide, 50% glycerol, pH7.3.

Validation Data



Western blot analysis of extracts from HeLa cells using phospho-CDC25A-S76 antibody (AP0321).  
Secondary antibody: HRP Goat Anti-Rabbit IgG (H+L) (AS014) at 1:10000 dilution.  
Lysates/proteins: 25µg per lane.  
Blocking buffer: 3% BSA.