

AP0314

Leader in Biomolecular Solutions for Life Science



Phospho-Bcl-XL-S62 Rabbit pAb

Catalog No.: AP0314 **2 Publications**

Basic Information

Observed MW

30kDa

Calculated MW

26kDa

Category

Polyclonal Antibody

Applications

WB,IF/ICC

Cross-Reactivity

Human,Mouse,Rat

Background

The protein encoded by this gene belongs to the BCL-2 protein family. BCL-2 family members form hetero- or homodimers and act as anti- or pro-apoptotic regulators that are involved in a wide variety of cellular activities. The proteins encoded by this gene are located at the outer mitochondrial membrane, and have been shown to regulate outer mitochondrial membrane channel (VDAC) opening. VDAC regulates mitochondrial membrane potential, and thus controls the production of reactive oxygen species and release of cytochrome C by mitochondria, both of which are the potent inducers of cell apoptosis. Alternative splicing results in multiple transcript variants encoding two different isoforms. The longer isoform acts as an apoptotic inhibitor and the shorter isoform acts as an apoptotic activator.

Recommended Dilutions

WB 1:500 - 1:2000

IF/ICC 1:50 - 1:100

Immunogen Information

Gene ID

598

Swiss Prot

Q07817

Immunogen

Synthetic peptide. This information is considered to be commercially sensitive.

Synonyms

BCLX; BCL2L; Bcl-X; PPP1R52; BCL-XL/S; Phospho-Bcl-XL-S62

Contact

 www.abclonal.com

Product Information

Source

Rabbit

Isotype

IgG

Purification

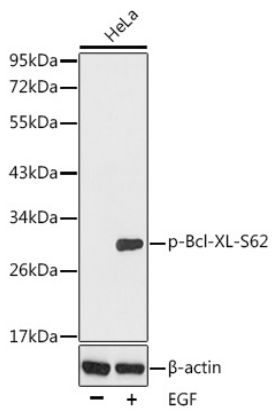
Affinity purification

Storage

Store at -20°C. Avoid freeze / thaw cycles.

Buffer: PBS containing 50% glycerol, preserved with proclin300 or sodium azide (as specified on the Certificate of Analysis), pH 7.3.

Validation Data



Western blot analysis of lysates from HeLa cells using Phospho-Bcl-XL-S62 Rabbit pAb (AP0314).

Secondary antibody: HRP-conjugated Goat anti-Rabbit IgG (H+L) (AS014) at 1:10000 dilution.

Lysates/proteins: 25µg per lane.

Blocking buffer: 3% BSA.