

AP0279

Leader in Biomolecular Solutions for Life Science



Phospho-EIF4G1-S1232 Rabbit pAb

Catalog No.: AP0279

Basic Information

Observed MW

175kDa

Calculated MW

175kDa

Category

Polyclonal Antibody

Applications

WB

Cross-Reactivity

Human

Background

The protein encoded by this gene is a component of the multi-subunit protein complex EIF4F. This complex facilitates the recruitment of mRNA to the ribosome, which is a rate-limiting step during the initiation phase of protein synthesis. The recognition of the mRNA cap and the ATP-dependent unwinding of 5'-terminal secondary structure is catalyzed by factors in this complex. The subunit encoded by this gene is a large scaffolding protein that contains binding sites for other members of the EIF4F complex. A domain at its N-terminus can also interact with the poly(A)-binding protein, which may mediate the circularization of mRNA during translation. Alternative splicing results in multiple transcript variants, some of which are derived from alternative promoter usage.

Recommended Dilutions

WB 1:500 - 1:2000

Immunogen Information

Gene ID

1981

Swiss Prot

Q04637

Immunogen

Synthetic peptide. This information is considered to be commercially sensitive.

Synonyms

P220; EIF4F; EIF4G; EIF4Gi; PARK18; EIF-4G1; Phospho-EIF4G1-S1232

Contact

 www.abclonal.com

Product Information

Source

Rabbit

Isotype

IgG

Purification

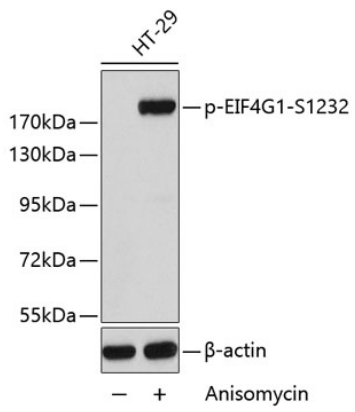
Affinity purification

Storage

Store at -20°C. Avoid freeze / thaw cycles.

Buffer: PBS with 0.02% sodium azide, 50% glycerol, pH7.3.

Validation Data



Western blot analysis of lysates from HT29 cells using Phospho-EIF4G1-S1232 Rabbit pAb (AP0279).

Secondary antibody: HRP-conjugated Goat anti-Rabbit IgG (H+L) (AS014) at 1:10000 dilution.

Lysates/proteins: 25µg per lane.

Blocking buffer: 3% BSA.