

AP0259

Leader in Biomolecular Solutions for Life Science



# Phospho-PKC delta-S645 Rabbit pAb

Catalog No.: AP0259

## Basic Information

### Observed MW

78kDa

### Calculated MW

78kDa

### Category

Polyclonal Antibody

### Applications

WB

### Cross-Reactivity

Human,Mouse,Rat

## Background

The protein encoded by this gene is a member of the protein kinase C family of serine- and threonine-specific protein kinases. The encoded protein is activated by diacylglycerol and is both a tumor suppressor and a positive regulator of cell cycle progression. Also, this protein can positively or negatively regulate apoptosis. Defects in this gene are a cause of autoimmune lymphoproliferative syndrome.

## Recommended Dilutions

WB 1:500 - 1:2000

## Immunogen Information

### Gene ID

5580

### Swiss Prot

Q05655

### Immunogen

Synthetic peptide. This information is considered to be commercially sensitive.

### Synonyms

MAY1; PKCD; ALPS3; CVID9; nPKC-delta; Phospho-PKC delta-S645

## Contact

 [www.abclonal.com](http://www.abclonal.com)

## Product Information

### Source

Rabbit

### Isotype

IgG

### Purification

Affinity purification

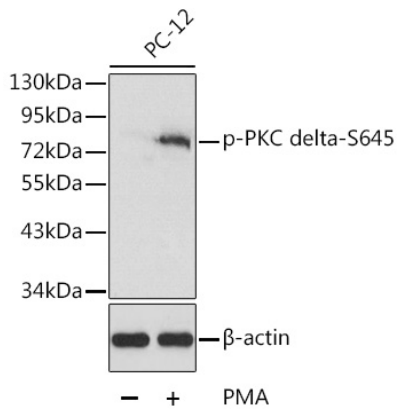
### Storage

Store at -20°C. Avoid freeze / thaw cycles.

Buffer: PBS with 0.02% sodium azide,50% glycerol,pH7.3.

## Validation Data

---



Western blot analysis of lysates from PC12 cells using Phospho-PKC delta-S645 Rabbit pAb (AP0259).

Secondary antibody: HRP-conjugated Goat anti-Rabbit IgG (H+L) (AS014) at 1:10000 dilution.

Lysates/proteins: 25µg per lane.

Blocking buffer: 3% BSA.