

AP0258

Leader in Biomolecular Solutions for Life Science



Phospho-MEK1-T291 Rabbit pAb

Catalog No.: AP0258

Basic Information

Observed MW

45kDa

Calculated MW

43kDa

Category

Polyclonal Antibody

Applications

WB

Cross-Reactivity

Human, Mouse, Rat

Background

The protein encoded by this gene is a member of the dual specificity protein kinase family, which acts as a mitogen-activated protein (MAP) kinase kinase. MAP kinases, also known as extracellular signal-regulated kinases (ERKs), act as an integration point for multiple biochemical signals. This protein kinase lies upstream of MAP kinases and stimulates the enzymatic activity of MAP kinases upon wide variety of extra- and intracellular signals. As an essential component of MAP kinase signal transduction pathway, this kinase is involved in many cellular processes such as proliferation, differentiation, transcription regulation and development.

Recommended Dilutions

WB 1:500 - 1:2000

Immunogen Information

Gene ID

5604

Swiss Prot

Q02750

Immunogen

A phospho specific peptide corresponding to residues surrounding T291 of human MEK1

Synonyms

MEL; CFC3; MEK1; MKK1; MAPKK1; PRKMK1; Phospho-MEK1-T291

Contact



www.abclonal.com

Product Information

Source

Rabbit

Isotype

IgG

Purification

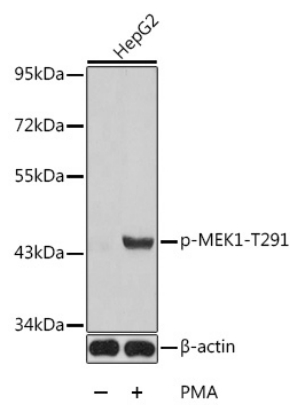
Affinity purification

Storage

Store at -20°C. Avoid freeze / thaw cycles.

Buffer: PBS with 0.02% sodium azide, 50% glycerol, pH 7.3.

Validation Data



Western blot analysis of extracts from HepG2 cells using Phospho-MEK1-T291 antibody (AP0258).
Secondary antibody: HRP Goat Anti-Rabbit IgG (H+L) (AS014) at 1:10000 dilution.
Lysates/proteins: 25µg per lane.
Blocking buffer: 3% BSA.