

AP0256

Leader in Biomolecular Solutions for Life Science



# Phospho-GAB1-Y627 Rabbit pAb

Catalog No.: AP0256

## Basic Information

### Observed MW

125kDa

### Calculated MW

77kDa

### Category

Polyclonal Antibody

### Applications

WB,ELISA

### Cross-Reactivity

Human,Mouse

## Background

The protein encoded by this gene is a member of the IRS1-like multisubstrate docking protein family. It is an important mediator of branching tubulogenesis and plays a central role in cellular growth response, transformation and apoptosis. Two transcript variants encoding different isoforms have been found for this gene.

## Recommended Dilutions

**WB** 1:500 - 1:2000

**ELISA** Recommended starting concentration is 1 µg/mL. Please optimize the concentration based on your specific assay requirements.

## Immunogen Information

### Gene ID

2549

### Swiss Prot

Q13480

### Immunogen

A synthetic phosphorylated peptide around Y627 of human GAB1 (NP\_002030.2?).

### Synonyms

DFNB26; Phospho-GAB1-Y627

## Contact

 [www.abclonal.com](http://www.abclonal.com)

## Product Information

### Source

Rabbit

### Isotype

IgG

### Purification

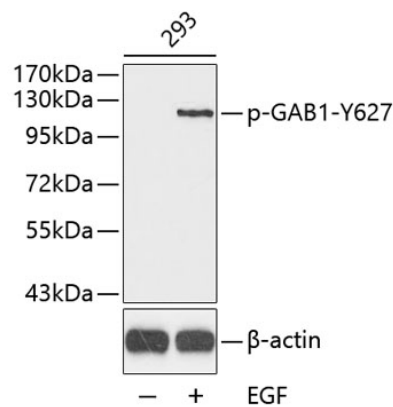
Affinity purification

### Storage

Store at -20°C. Avoid freeze / thaw cycles.

Buffer: PBS with 0.01% thimerosal, 50% glycerol, pH7.3.

Validation Data



Western blot analysis of lysates from 293 cells using Phospho-GAB1-Y627 Rabbit pAb (AP0256).  
Secondary antibody: HRP-conjugated Goat anti-Rabbit IgG (H+L) (AS014) at 1:10000 dilution.  
Lysates/proteins: 25µg per lane.  
Blocking buffer: 3% BSA.